




User Manual

Ablerex Power Master v3.3.0

Windows

Publication Date: January 2023 192321002034002




The information presented in this manual is not warranted by Ablerox to be authoritative, error free, or complete. Ablerox assumes no liability for damages, violations of codes, improper installation, system failures, or any other problems that could arise based on the use of this publication.

Ablerox reserves the right to make changes or updates with respect to or in the content of the publication or the

format thereof at any time without notice.

Copyright, intellectual, and all other proprietary rights in the content (including but not limited to software, audio, video, text, and photographs) rests with Ablerox or its licensors. All rights in the content not expressly granted herein are reserved.

No rights of any kind are licensed or assigned or shall otherwise pass to persons accessing this information.



1.	Installation Instructions	2
1.1	System requirements	2
1.2	Install AblereX PowerMaster	2
1.3	Uninstall AblereX PowerMaster	5
2.	User Authentication	6
2.1	Login	6
2.2	Change Password	8
2.3	Logout	10
2.4	Account Activity	11
3.	Function Descriptions	12
3.1	Real-Time Information	13
3.2	UPS Rating and Information	15
3.3	Function selection	16
3.3.1	Control	16
3.3.2	Import Setting	16
3.3.3	Export Setting	17
3.3.4	General Setting	17
3.3.5	SMS	21
3.3.6	E.Mail Configuration	23
3.3.7	Data Log	24
3.3.8	Event Log	25
3.3.9	Schedules	26
3.3.10	Oscilloscope	29
3.3.11	About	29
3.4	Pop-up-message	29

1.

Installation Instructions

The free software is available for all single-phase UPS models and downloadable from www.ablerex.eu/download

1.1

System requirements

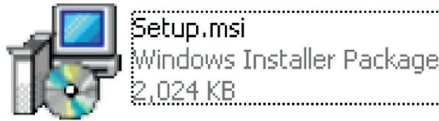
- Operating OS: Windows 11/10/8/7, Vista, XP 11, Windows Server 2022/2019/2016/2012/2008/2003/
- Peripherals: RS-232 or USB

1.2

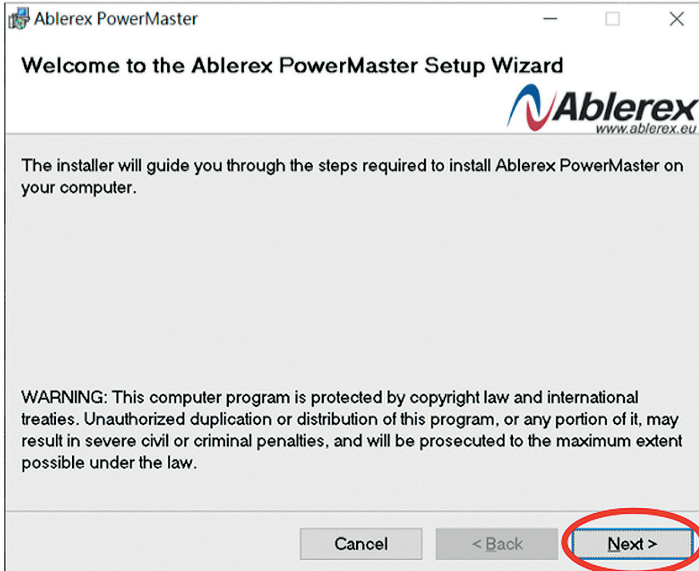
Install Ablerex PowerMaster

Step1. Please login as an Administrator.

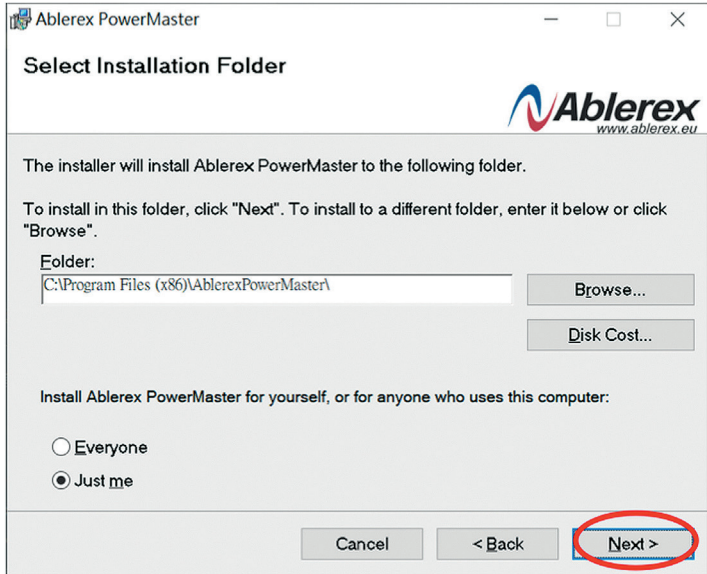
Step2. Double click "Setup.msi" to Install the Ablerex PowerMaster



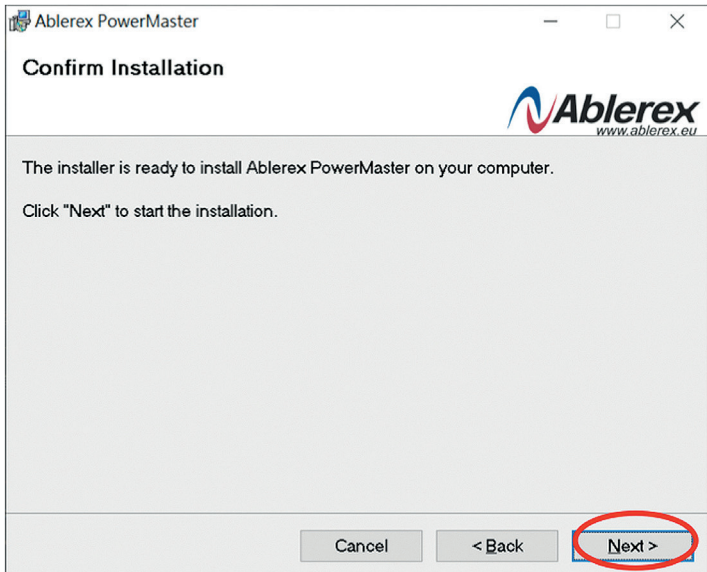
Step3. Click "Next" to the next step.



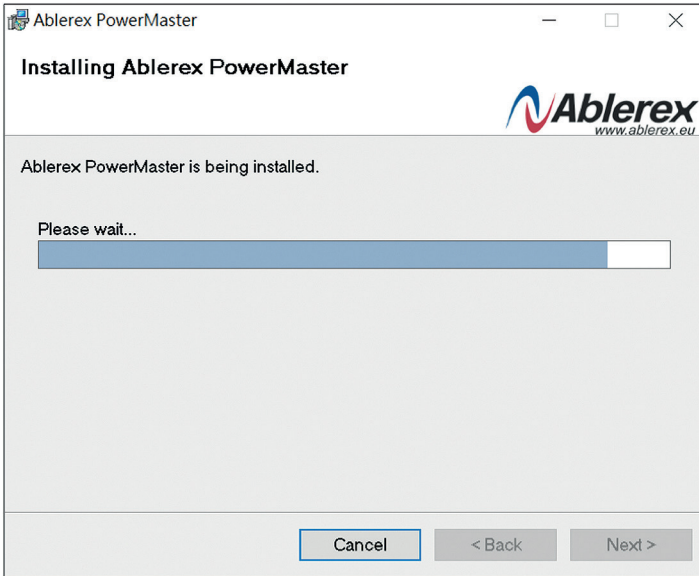
Step4. Click “Browse”, if user wants to change the installing directory. Otherwise, click “Next” to next step.



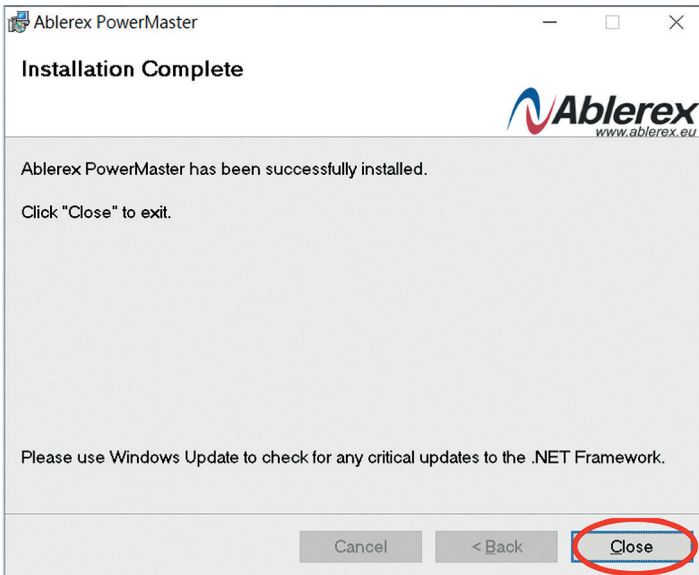
Step5. Click “Next” to next step



Step6. Installing AblereX PowerMaster program.



Step7. Click "Close" to finish the installation.

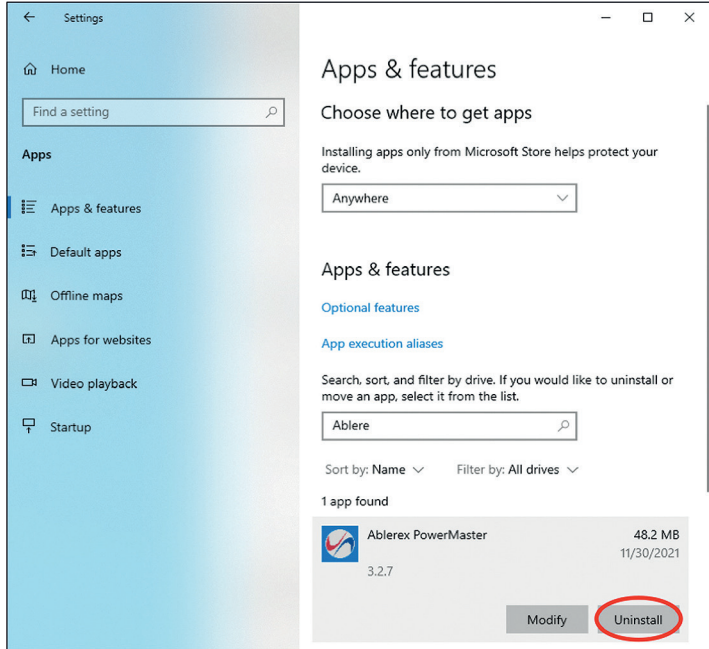


1.3 Uninstall Ablerex PowerMaster

Remove Ablerex PowerMaster

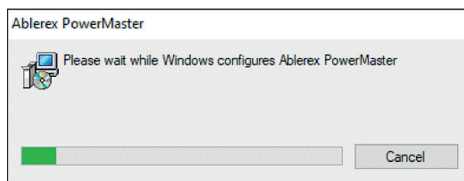
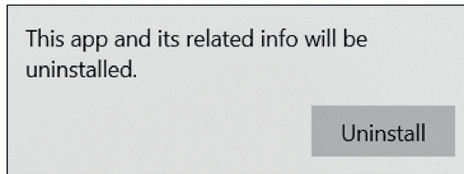
Step1. Go to Settings from your computer and select “Apps & features”.

Step2. Select “Ablerex PowerMaster” and click “Uninstall” as the following picture.



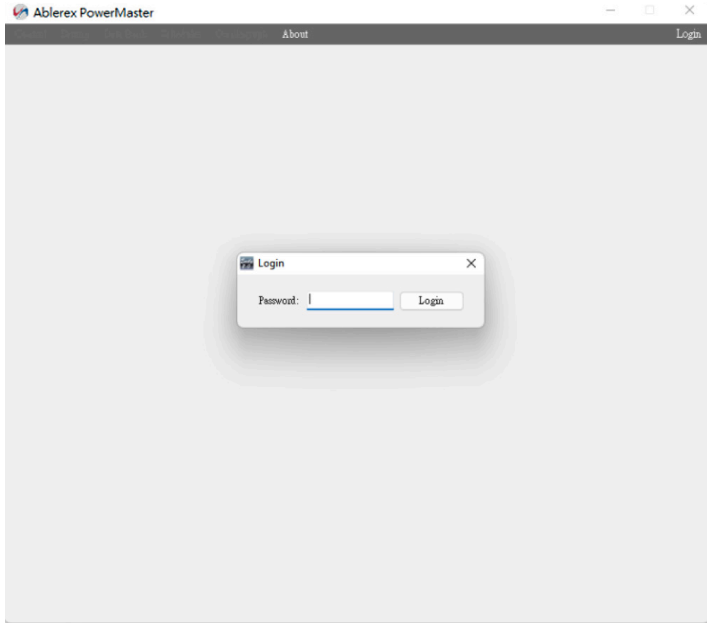
Step3. Click “Uninstall” to confirm removing the Ablerex PowerMaster.

Step4. Ablerex PowerMaster icon will disappear in the “Apps & feature” page after uninstall process.



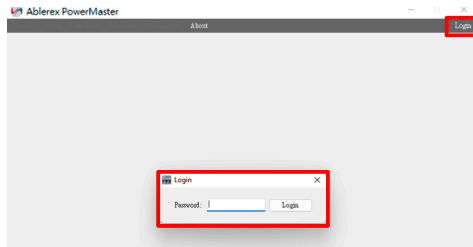
2. User Authentication

For security concerns, user must login with password to use complete function.

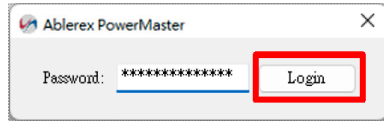


1.3 Login

Step 1. Click Login.

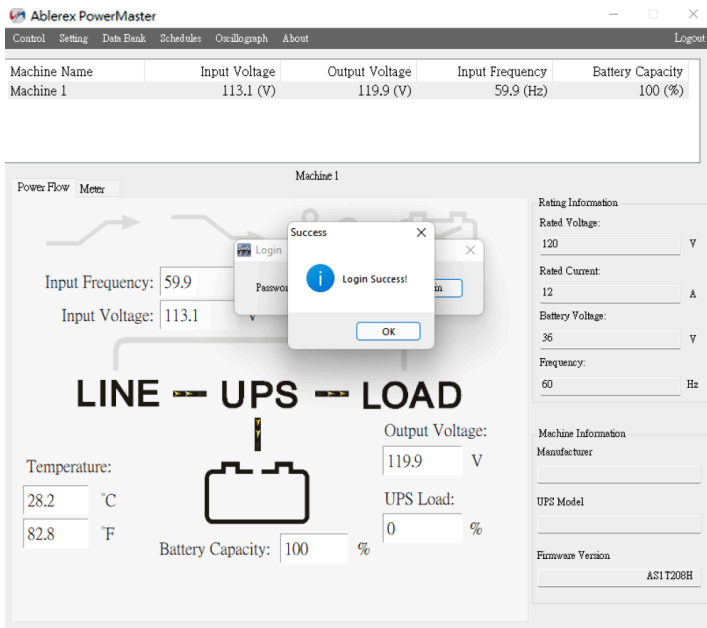


Step 2. Enter password and click Login button.



For first time login, please login with default password.
Default Password: !UPSmonitoring

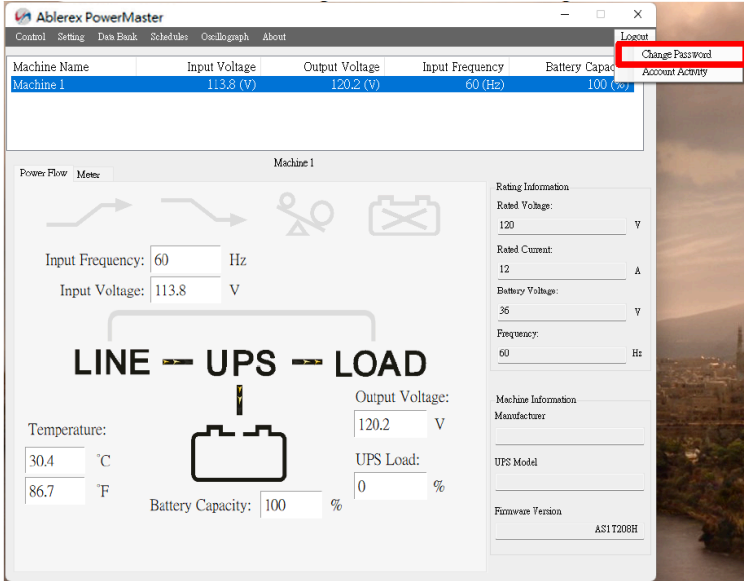
Step 3. Successfully login.



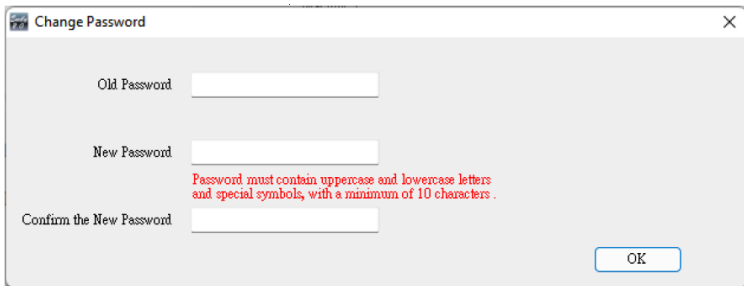
2.2 Change Password

User can change password after first time login which we strongly recommend. Please following the steps below to change password.

Step 1. Cursor moves to Logout and select Change Password



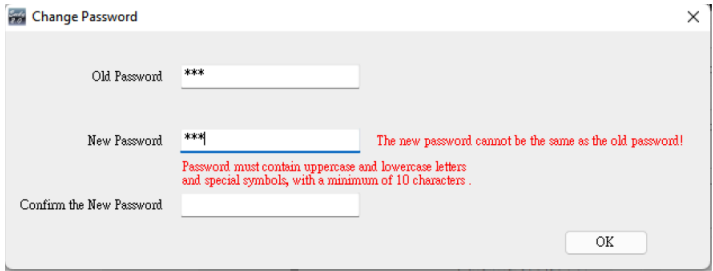
Step 2. Enter Old Password, New Password and Confirm the New Password, then click OK



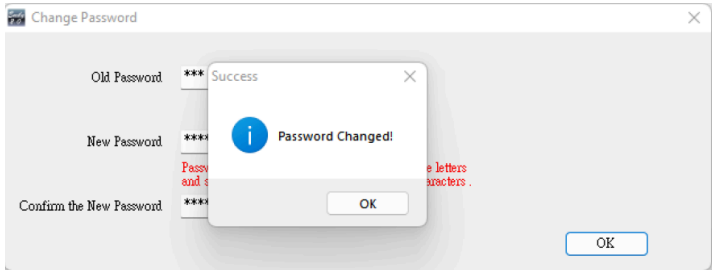
Password requirements:

- At least 10 characters
- At least one lowercase character (a-z)
- At least one uppercase character (A-Z)
- At least one symbol (? , . ! _ - ~ \$ % + =)
- Must be different from old password

If new password does not meet above formats, there will be a prompt next to the input box.

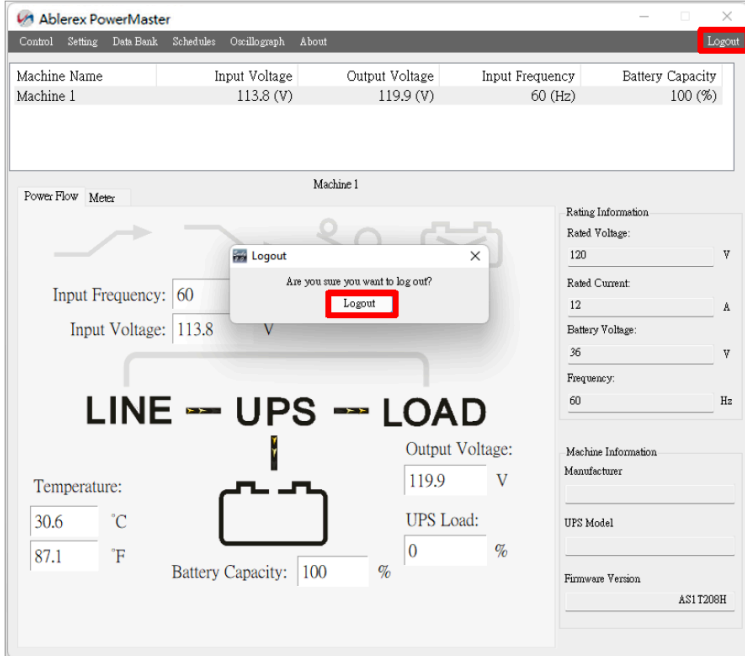


Step 3. Password changed.
When password changed, the system will automatically logout. User needs to login with new password.



2.3 Logout

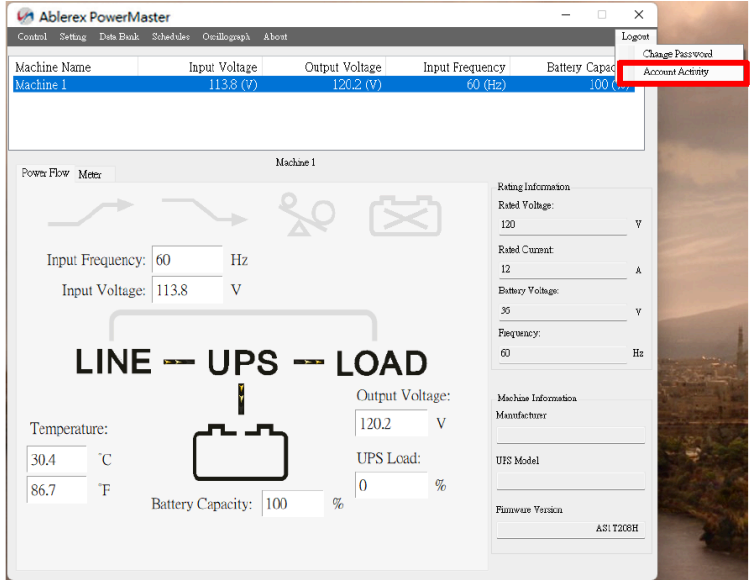
First, click the Logout button, and then click the Logout button on the pop-up, you can successfully log out.



2.4 Account Activity

This function can view all the records made by account activity, including Login success, Login failed, Log out, Change Password and Account Lockout. Please following the steps below to view Account Activity.

Step 1. Cursor moves to Logout and then select Account Activity button

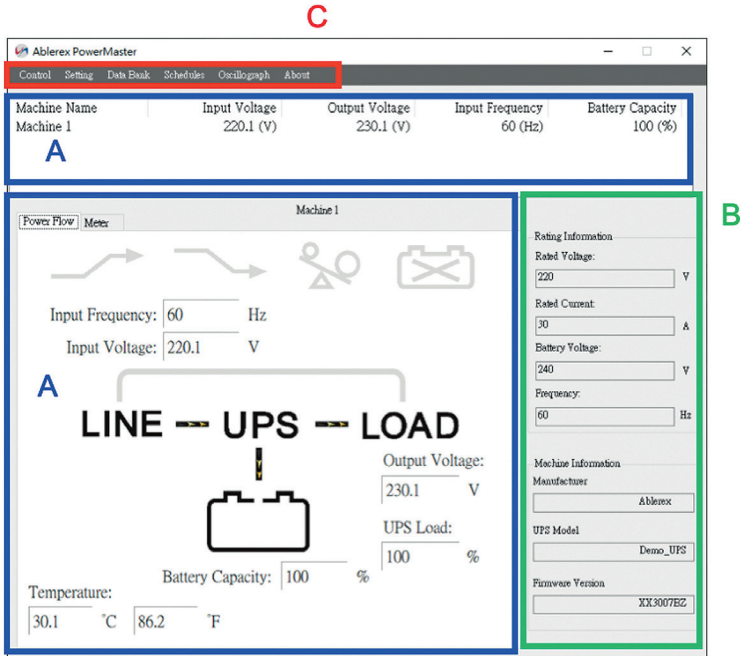


Step 2. Viewing Account Activity

ActivityDate	Activity
1/16/2023 1:23:11 PM	Login failed
1/16/2023 1:23:14 PM	Login success
1/16/2023 1:57:42 PM	Change Password
1/16/2023 2:12:56 PM	Login success
1/16/2023 5:33:23 PM	Log out
1/16/2023 5:33:36 PM	Login success
1/16/2023 5:33:52 PM	Log out
1/16/2023 5:33:55 PM	Login failed
1/16/2023 5:33:57 PM	Login failed
1/16/2023 5:34:00 PM	Login failed
1/16/2023 5:34:02 PM	Login failed
1/16/2023 5:34:04 PM	Login failed

3.

Function Descriptions



A. UPS real-time information and status: Detail in section 2.1

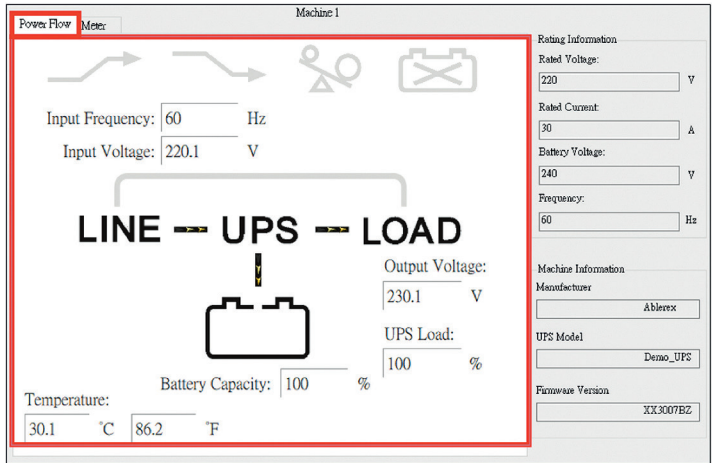
B. UPS rating and information display area: Detail in section 2.2

C. Function selection area: Detail in section 2.3

3.1 Real-Time Information

Please refer below section for Flow Format Page & Meter Format Page.

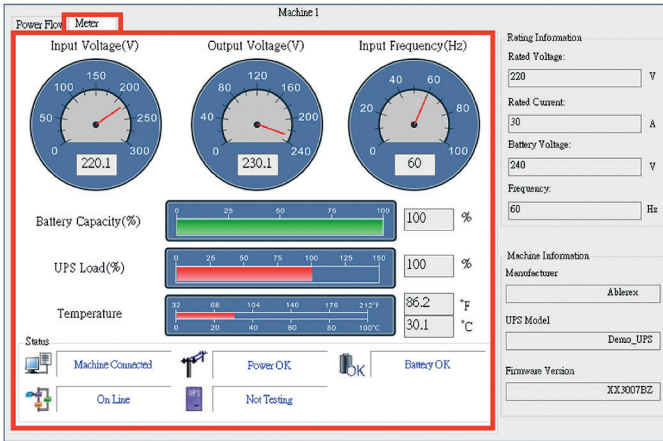
- Input Voltage of UPS
- Output Voltage of UPS
- Input Frequency of UPS
- Load level of UPS
- UPS status
- Power Flow Format Page & Meter Format Page



Power Flow page**

※ Symbols Description

Item	Symbols	Description
1		Boost
2		Buck
3		UPS Overloading
4		Battery Abnormal
5		Battery Normal
		Battery Low
6		Power flow figure



Meter Page:

※ Symbols Description

Item	Symbols	Description
1		UPS is connected successfully to the computer
		The connection between the UPS & the Computer is disrupted
2		Utility Power Normal
		The utility power is absent or abnormal conditions
3		Battery Level Normal
		Battery Low
		The UPS battery is near to end of discharge or is at low power level (2 Icon swap)
4		UPS Battery Abnormal
		ON Line Model
		Bypass Model
5		Under self test
		No Test In-progress
6		Bypass mode (2 Icon swap)

3.2 UPS Rating and Information

Rating Information

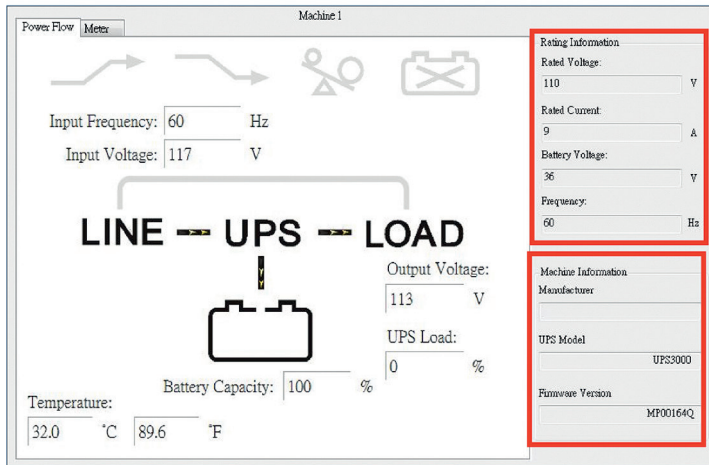
Provides rating of UPS such as:

- Rating Voltage
- Rating Current
- Battery Voltage
- Frequency

Machine Information

Provides information of UPS such as:

- Manufacturer
- UPS Model
- Firmware Version



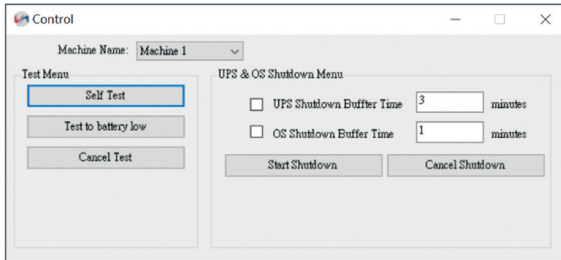
3.3 Function selection

This chapter will introduce how to use or configure for those specific function “Control”, “Import Setting”, “Export Setting”, “General Setting”, “E-mail Setting”, “SMS Setting”, “Data Log”, “Event Log”, “Schedules”, “Oscillograph” and “About”.

3.3.1 Control

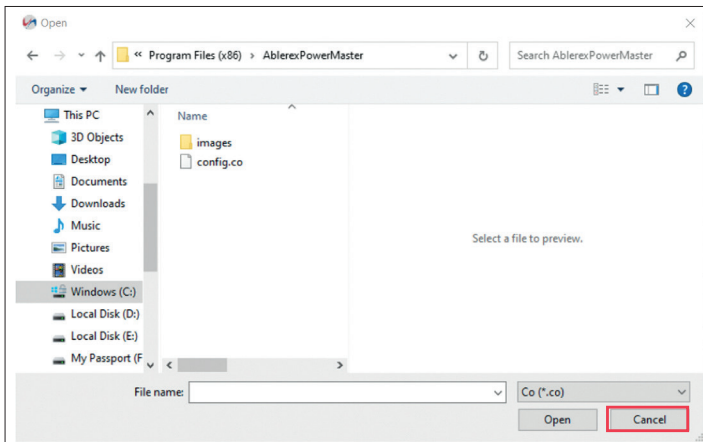
Command UPS directly for the following test.

- UPS Self-Test
- UPS Self-Test Test to battery low
- Cancel UPS Self-Test
- UPS & OS Shutdown
- UPS & OS Cancel Shutdown

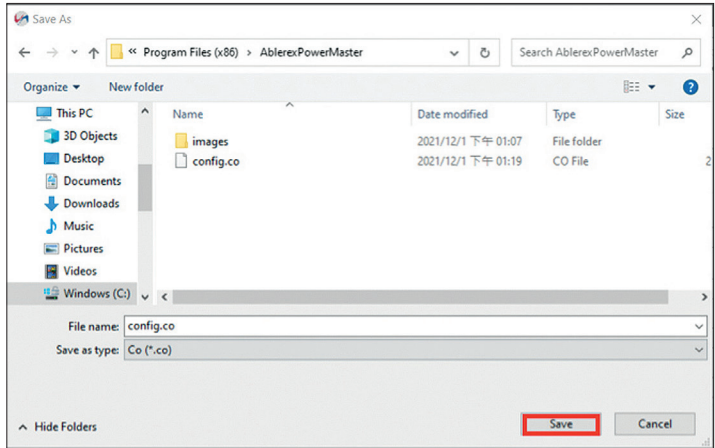


3.3.2 Import Setting

Select the Setting file which you want and click “Open” to Import the Settings to Ablerex PowerMaster.



3.3.3 Export Setting



Select Export Folder and click "Save" to save the settings.

3.3.4 General Settings

Allows user to select and set the connecting RS-232/USB or Remote, set to Data Log function and set to turn of UPS or OS condition etc.

3.3.4.1 Setting amount of unit and Machine name

Name	<input type="text" value="Machine 1"/>	Machine Number	<input type="text" value="1"/>
	<input type="text" value="Machine 2"/>	Machine Number	<input type="text" value="2"/>
	<input type="text" value="Machine 3"/>	Machine Number	<input type="text" value="3"/>
	<input type="text" value="Machine 4"/>	Machine Number	<input type="text" value="4"/>

3.3.4.2 Choose the Protocol

Standard: for Standard or Remote

Protocol	<input type="text" value="Standard"/>
	<input type="text" value="Standard"/>
	<input type="text" value="Remote"/>

3.3.4.3

Setting Communication Interface

Communication	RS232	Com Port	
Baud Rate	2400	Data Log Record:	<input checked="" type="checkbox"/> per 10 secs
		Maximum	Unlimited

- Communication Interface: USB / RS232
- Baud Rate: 2400bps/4800bps/9600bps
- Con Port: COM1~COMX

3.3.4.4

Log Record setting

Communication	RS232	Com Port	
Baud Rate	2400	Data Log Record:	<input checked="" type="checkbox"/> per 10 secs
		Maximum	Unlimited

- Enable the Data Log Record function
- Set Record timer interval
- Set data storage count of record list

3.3.4.5

Data retention setting

The time of data stored in a database can set by the user. If the value is "0", it means database will never be deleted.

Days of data retention	0	(0:Never Delete)
------------------------	---	------------------

3.3.4.6

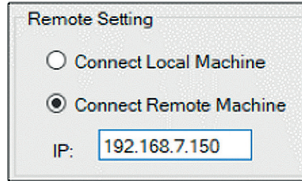
Language

The Ablerex PowerMaster provides various major languages for user. The initial is English.

Language	English
----------	---------

3.3.4.7 Remote Setting

Connect Local Machine: Set this PC as the Local Machine which is connected to the UPS.
Connect Remote Machine: Set this PC as the Remote Machine.
Key in the IP of Local Machine to catch the UPS information and build remote shutdown control.



Note:
With "Connect Remote Machine" you cannot send commands like Scheduling or UPS turn off.

3.3.4.8 Enable ACPI Shutdown

When Enable ACPI Shutdown, all of the Shutdown functions controlled by ACPI.



3.3.4.9 OS Shutdown Type

OS shutdown options.



3.3.4.10 Saved Log

If auto saving function is set, the AblereX PowerMaster will display the closed record after restart.



3.3.4.11

Optional command

Set the file to be executed before the system shutdown. The selectable time is from 0 min. to 20 min.

Optional Command File to Excute after OS Started Countdown Minute
Max: 20 minutes

3.3.4.12

When Power Failure, OS Shutdown Buffer Time

Set the Warning Time for system shutdown operation after Power

When Power Failure, OS Shutdown Buffer Time (Range: Minute

3.3.4.13

When Battery Low, OS Shutdown Buffer Time

Set the Warning Time for system shutdown operation after Battery Low.

When Battery Low, OS Shutdown Buffer Time (Range: 0-600) Minute

The selectable time is from 0 min. to 600 min.

3.3.4.14

When Battery Capacity less than or equal the setting level,
OS Shutdown Buffer Time

Set the Warning Time for system shutdown operation after Battery Low. The selectable time is from 1min. to 600min. The selectable battery Capacity is from 0% to 100%.

When Battery Capacity Low than % (0-100%)
 OS Shutdown Buffer Time (Range: 1-600) Minute

3.3.4.15

Action When Utility Recovery

When utility Recovered, OS will be continued or cancel the shutdown.

When Utility Recovered,

3.3.4.16

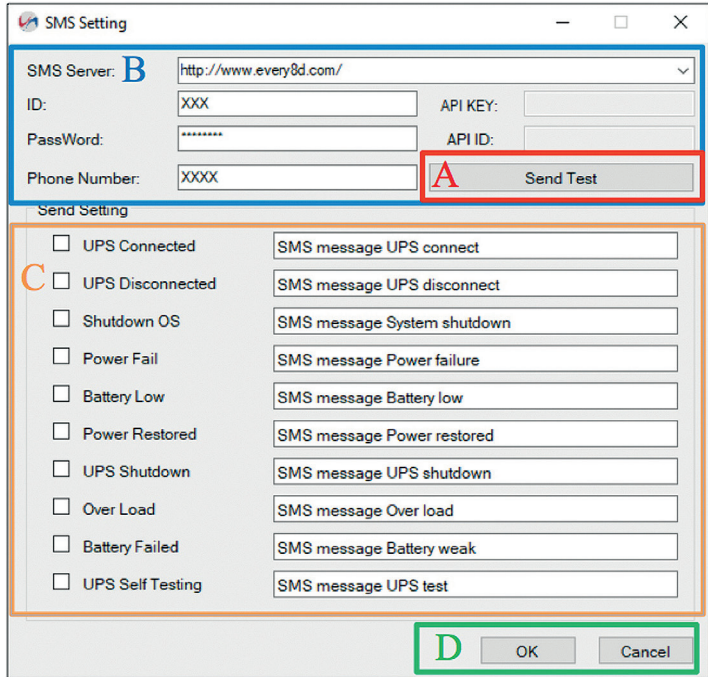
Turn off UPS

Set time interval from Windows shutdown to UPS turn-off. The selectable time is from 0.2 min. to 10min.

Turn Off UPS
 Time Needed for Shutdown Sequence before UPS Turns Off:

3.3.5 SMS

Configure to send the event message (e.g. AC Power Fail) to specific one by SMS. The following section is for the detail configuration approach.



These currently have 3 third-party SMS providers supported by Ablerex PowerMaster program. For more information on subscriptions and charges, please go to their respective website as follow:

- 1) For [Every8d]: Go to <http://www.every8d.com/>
 Note: Please subscribe as “Corporate” account in order to use Ablerex PowerMaster program SMS function.
- 2) For [Voipcheap]: Go to <http://www.VOIPcheap.com>
 Note: Please buy credits in order to use Ablerex PowerMaster program SMS function.
- 3) For [Clickatell]: Go to <http://www.clickatell.com/>
 Note: Payment has to be made to obtain an “API ID” before use.

A. Send Test:

Click to send a test message.

B. Account Settings:

Insert the SMS provided name, ID, passwords, "API-ID(1)", "API-KEY(1)" and mobile phone number (international dialing format, do not put the + or 00, example for number 003934772xxxxx insert 3934772xxxxx).

Note: Do not send to more than 1 mobile phone number.

(1) For Clickatell subscriber only

C. Event & Message Selections:

Click to select the desire Events to be broadcasted and the respective message contents (You may change and retype the Message contents to meet your requirement in English).

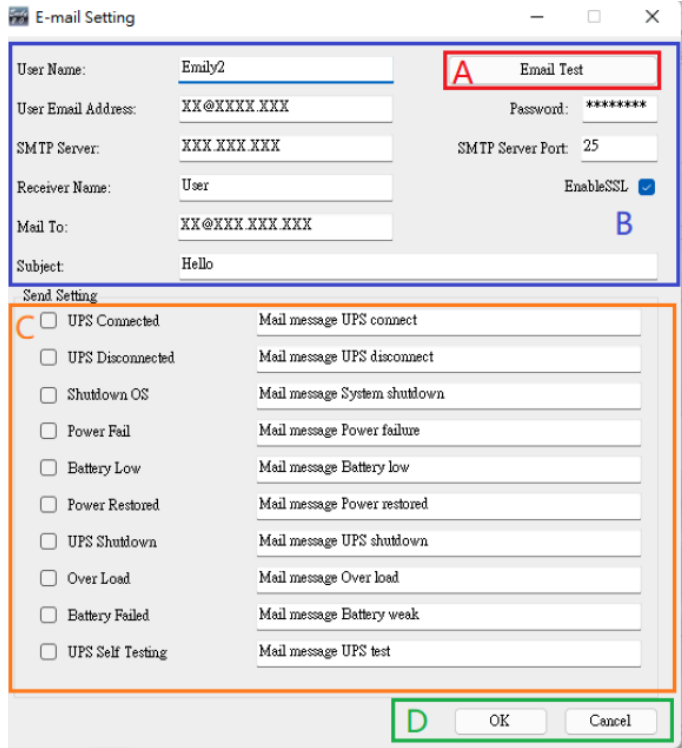
D. Save Setting:

Click "OK" to save & apply settings

Note: Internet Firewall may not allow this SMS function. If you have installed Firewall, please allow this function.

3.3.6 E-Mail Configuration

Configure to send the event message (e.g. AC Power Fail) to specific one by E-mail. The following section is for the detail configuration approach.



A. Email Test **

Click to send a test message to confirm the settings are correct

B. Account Settings **

- User Name: Sender
- User Email Address: select a sender E-Mail
- Password: Password of your email server
- SMTP Server: SMTP server or IP address
- SMTP Server port: SMTP Server port
- Receiver Name: name of receiver
- Mail To: Mail address of receiver
- Subject: Subject of E-Mail

Note: If you want to send an email to more than 1 email address, you must use “;” to separate email addresses.

C. Send Setting **

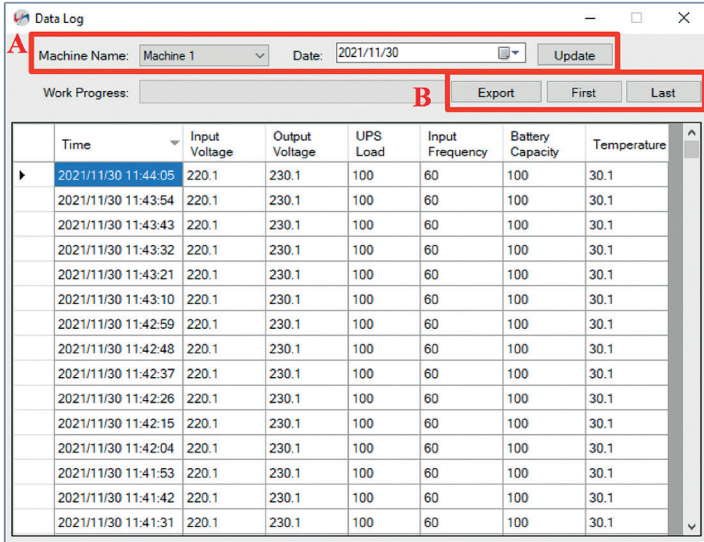
You can use the default message or set or modify your own in English.

D. Save Setting **

Click “OK” to save and apply settings. Note: Internet Firewall may not allow this E-Mailing function.

3.3.7 Data Log

The data log can be read directly via Ablerex PowerMaster or export to an file with xls or txt format for application. The following section is for the detail operation.



A. area:

Choose the "Machine Name", "Date", and click "Update" for data refreshing.

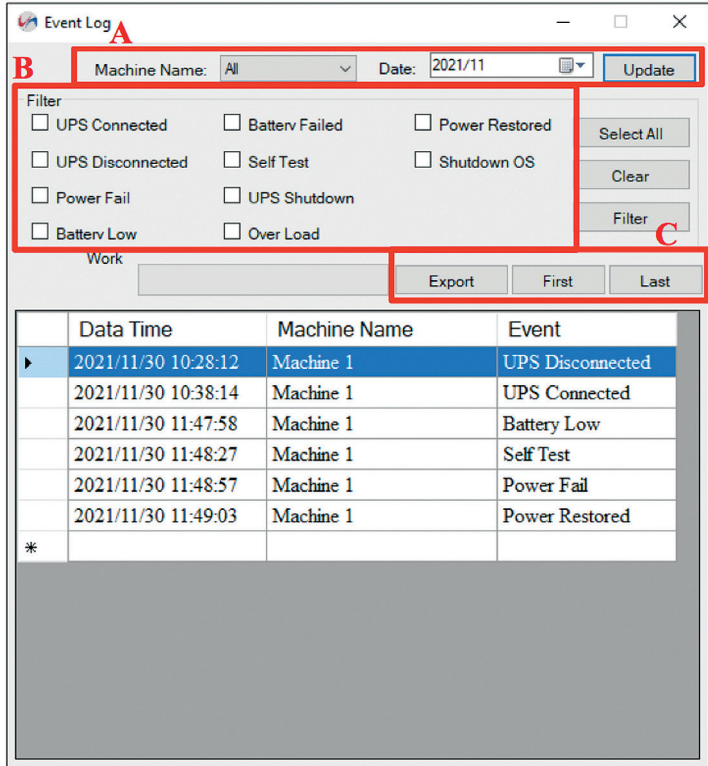
B. area:

- Export: Click to export the current data into "xls" or "txt" format.
- First: Click to go to the first recorded entry.
- Last: Click to go to the last recorded entry.

3.3.8

Event log

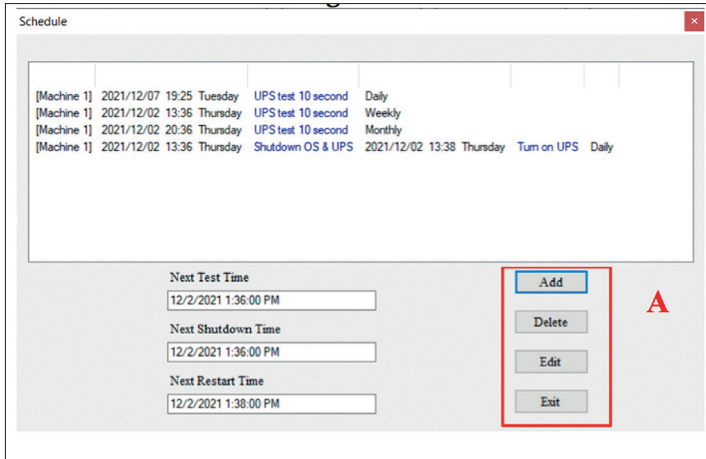
The event log can be read directly via Ablerex PowerMaster or export to a file with xls or txt format for application. The following section is for the detail operation. the detail operation.



- A. area:**
Choose the “Machine”, “Date”, and click “Select” for data refreshing.
- B. area:**
Event log filter for read or export.
- C. area:**
 - Export: Click to export the current data into “xls” or “txt” format.
 - First: Click to go to the first recorded entry.
 - Last: Click to go to the last recorded entry.

3.3.9 Schedules

Ablerex PowerMaster supports the scheduling self test, turn-on and turn-off function for UPS. The following section is for the detail configuration approach.



A. area:

- Add: Create a new task. Please refer to section 3.3.9.1 for detail.
- Delete: Delete a task.
- Edit: Edit a task Please refer to section 3.3.9.2 for detail.
- Exit: Exit the Schedules.

3.3.9.1 Add Schedules

A. Executive Time **

- Date: Date Setting.
- Time: Time Setting.
- Frequency: Set execute cycle of the schedule.

B. Control **

- Self-test for 10 seconds.
- Self-test for (1-99) minutes.
- Self-test until Battery condition xx%.
- Self-test until Low Battery condition.
- Shut Down Operating System and UPS.

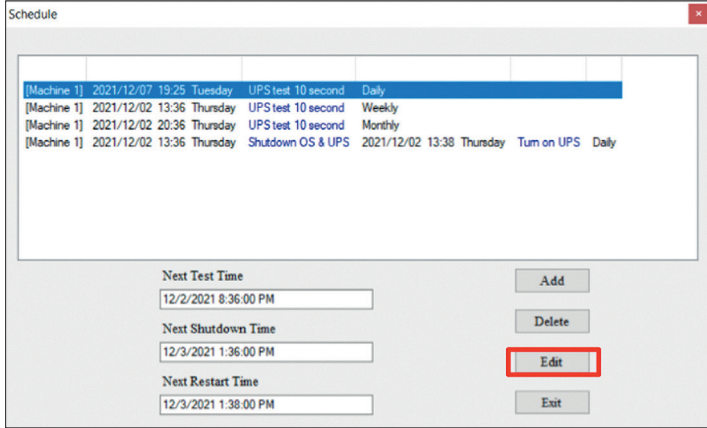
C. Function:

Add or Cancel schedule.

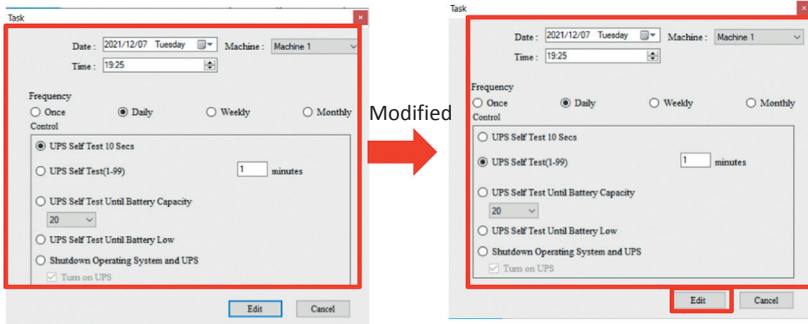
3.3.9.2

Edit Schedules

Frist, Select the schedule you want to modify. And click “Edit” to modify task.

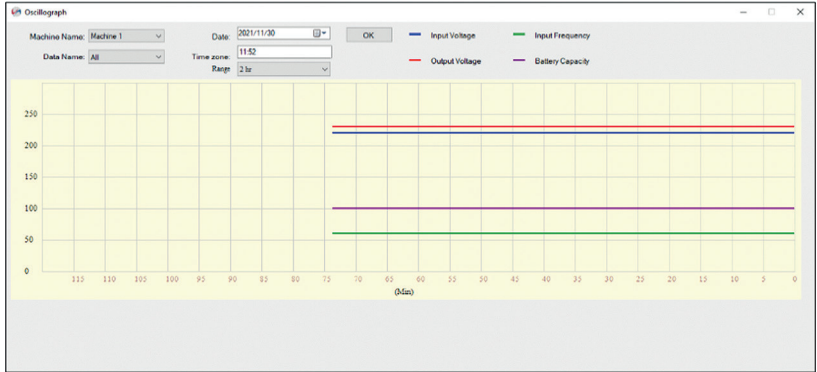


Click “Edit” to modify and save this task.



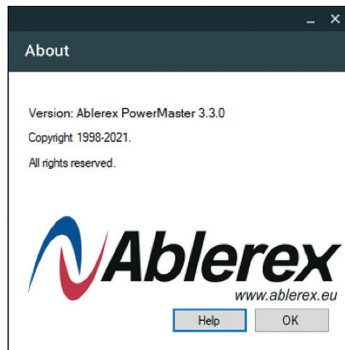
3.3.10 Oscillograph

It is visual data curve for easy check.



3.3.11 About

It displays copyright and version information of Ablerex PowerMaster.



3.4 Pop-up message

When event occurred (e.g. power fail battery low ... etc.), Ablerex PowerMaster will pop up a message to remind the user to handle it.



