

Emily2 User Manual

For

Microsoft Windows XP

Microsoft Windows Vista

Microsoft Windows 7

Microsoft Windows 8

Microsoft Windows 10

Microsoft Windows 11

Microsoft Windows Server 2003

Microsoft Windows Server 2008

Microsoft Windows Server 2012

Microsoft Windows Server 2016

Microsoft Windows Server 2019

Microsoft Windows Server 2022

Contents

1. Installation Instructions.....	2
1.1 System requirements.....	2
1.2 Install Emily2.....	2
1.3 Uninstall Emily2.....	5
2. User Authentication.....	6
2.1 Login.....	6
2.2 Change Password.....	8
2.3 Logout.....	10
2.4 Account Activity.....	11
3. Function Descriptions.....	12
3.1 Real-Time Information.....	13
3.2 UPS Rating and Information.....	16
3.3 Function selection.....	17
3.3.1 Control.....	17
3.3.2 Import Setting.....	17
3.3.3 Export Setting.....	18
3.3.4 General Settings.....	18
3.3.5 SMS.....	23
3.3.6 E-Mail Configuration.....	25
3.3.7 Data Log.....	27
3.3.8 Event log.....	28
3.3.9 Schedules.....	29
3.3.10 Oscillograph.....	32
3.3.11 About & Security notice.....	32
3.4 Pop-up message.....	33

1. Installation Instructions

1.1 System requirements

- Operating OS: Windows XP / Vista / 7 / 8 / 10 / 11, Windows Server 2003/2008/2012/2016/2019/2022
- Peripherals: RS-232 or USB

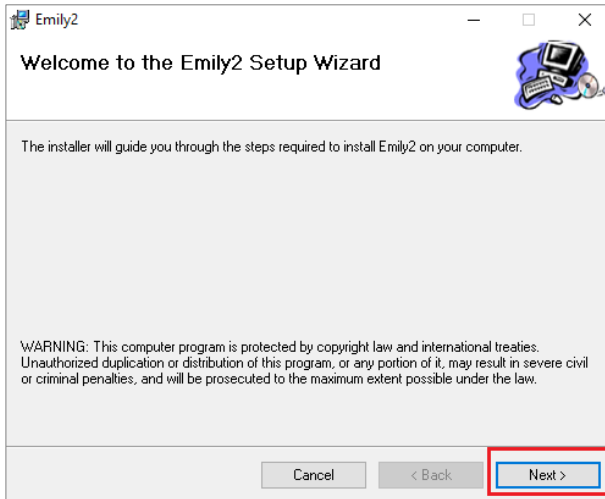
1.2 Install Emily2

Step1. Please login as an Administrator.

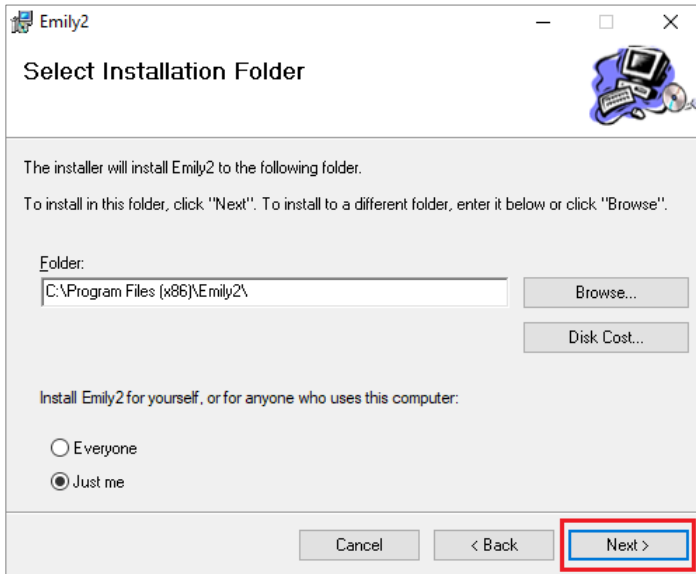
Step2. Double click "Setup.msi" to Install the Emily2.



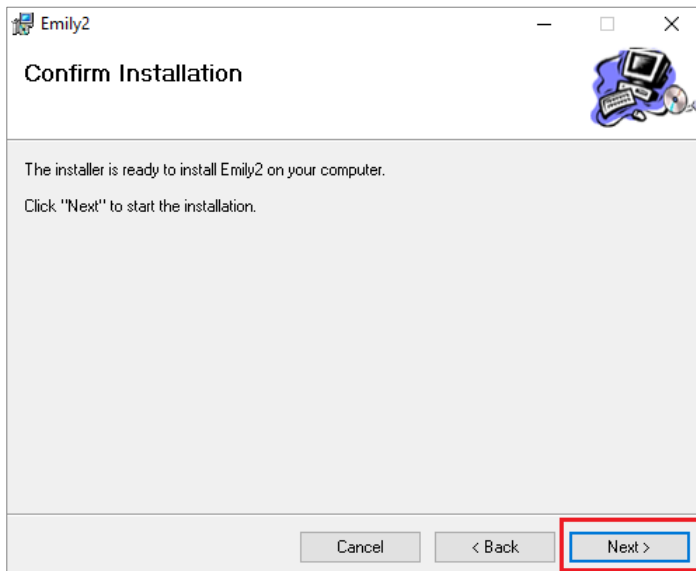
Step3. Click "Next" to the next step.



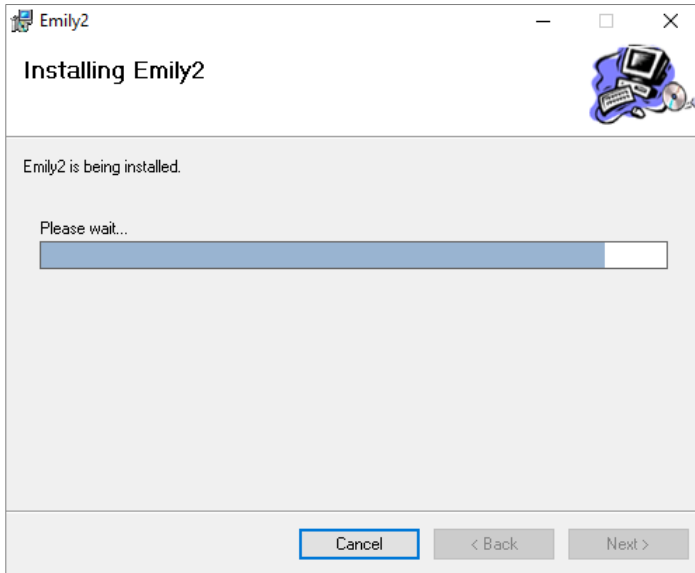
Step4. Click "Browse", if user wants to change the installing directory.
Otherwise, click "Next" to next step.



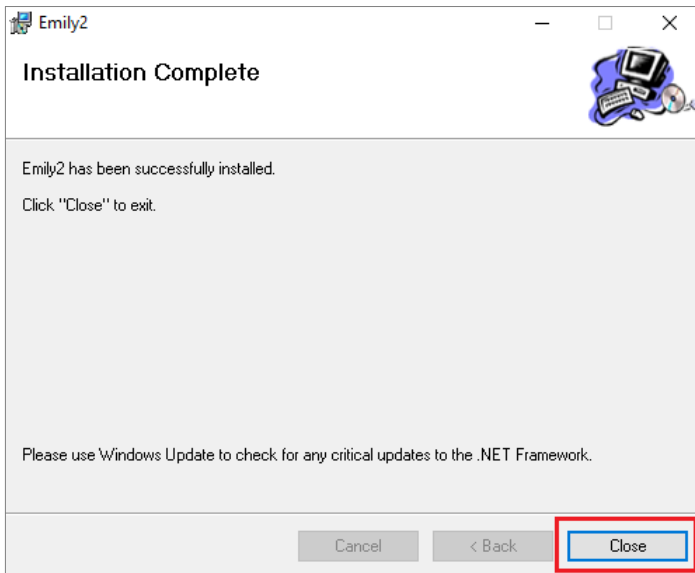
Step5. Click "Next" to next step.



Step6. Installing Emily2 program.



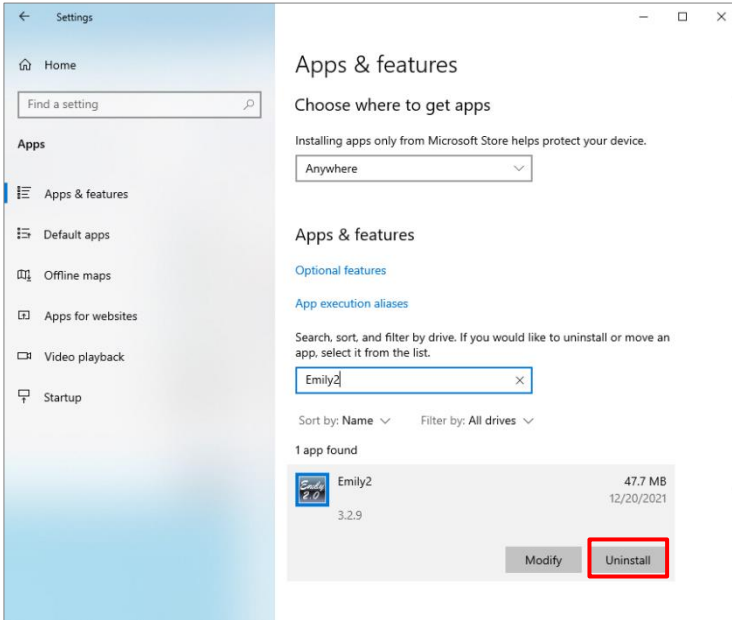
Step7. Click "Close" to finish the installation.



1.3 Uninstall Emily2

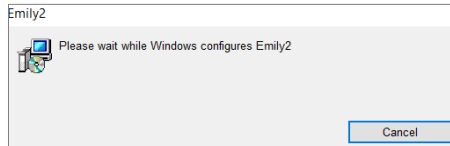
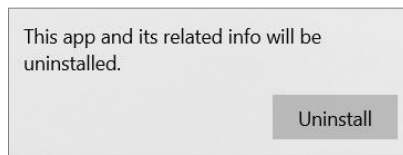
Remove Emily2

Step1. Go to Settings from your computer and select “Apps & features”.
Step2. Select “Emily2” and click “Uninstall” as the following picture.



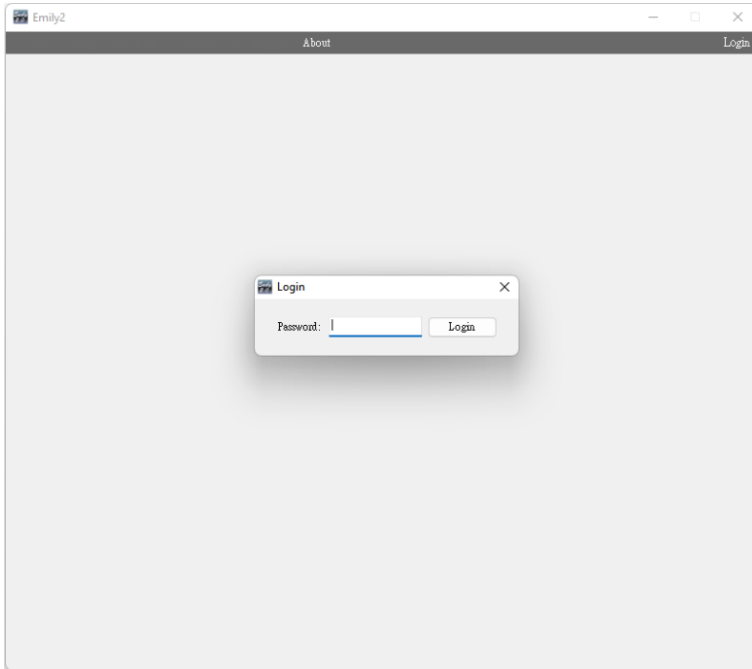
Step3. Click “Uninstall” to confirm removing the Emily2.

Step4. Emily2 icon will disappear in the “Apps & feature” page after uninstall process uninstall.



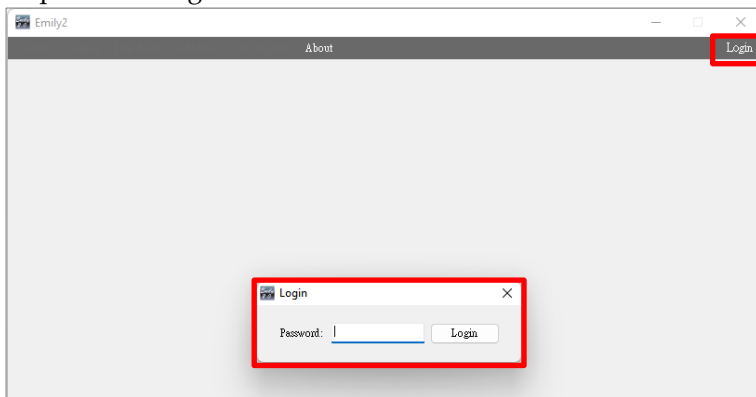
2. User Authentication

For security concerns, user must login with password to use complete function.



2.1 Login

Step 1. Click Login.

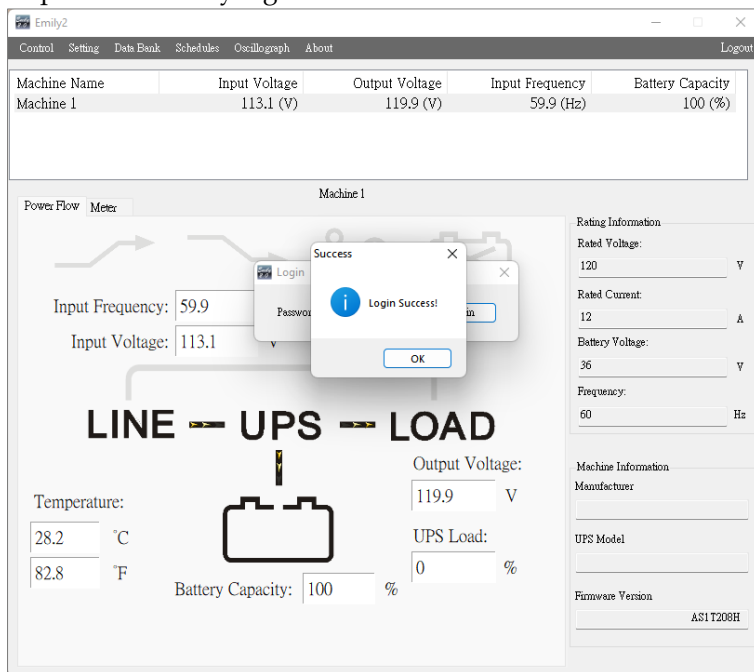


Step 2. Enter password and click Login button.



For first time login, please login with default password.
Default Password: !UPSmonitoring

Step 3. Successfully login.



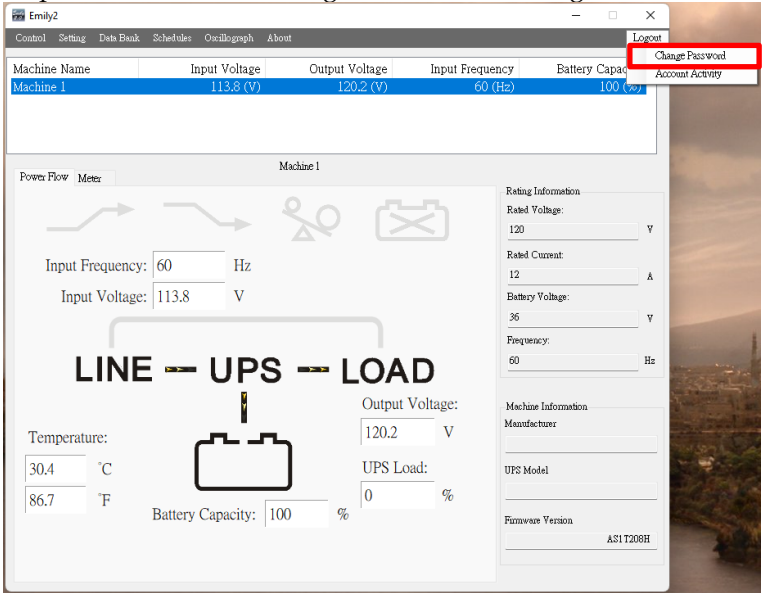
Note:

If you login failed for 5 times, the account will be locked, and you will have to wait for 3 minutes before you can login again.

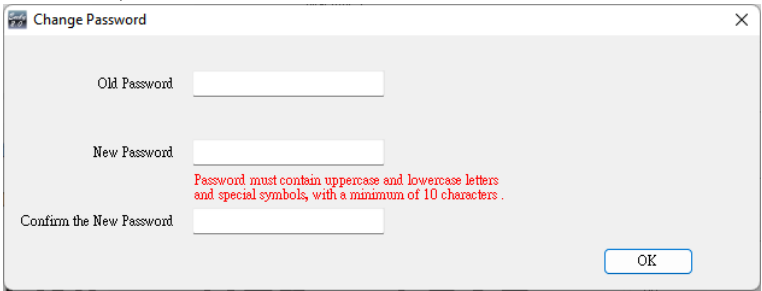
2.2 Change Password

User can change password after first time login which we strongly recommend. Please following the steps below to change password.

Step 1. Cursor moves to Logout and select Change Password



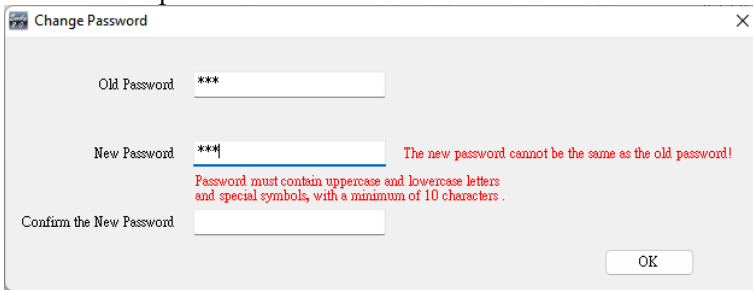
Step 2. Enter Old Password, New Password and Confirm the New Password, then click OK



Password requirements:

- At least 10 characters
- At least one lowercase character (a-z)
- At least one uppercase character (A-Z)
- At least one symbol (? . , ! _ - ~ \$ % + =)
- Must be different from old password

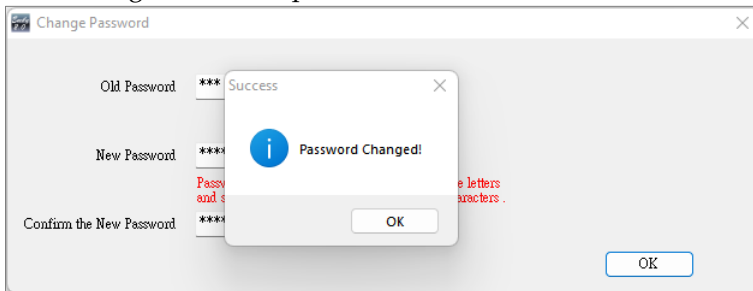
If new password does not meet above formats, there will be a prompt next to the input box.



The screenshot shows a 'Change Password' dialog box with three input fields: 'Old Password' (containing three asterisks), 'New Password' (containing three asterisks), and 'Confirm the New Password' (empty). A red error message is displayed next to the 'New Password' field: 'The new password cannot be the same as the old password! Password must contain uppercase and lowercase letters and special symbols, with a minimum of 10 characters.' An 'OK' button is located at the bottom right.

Step 3. Password changed.

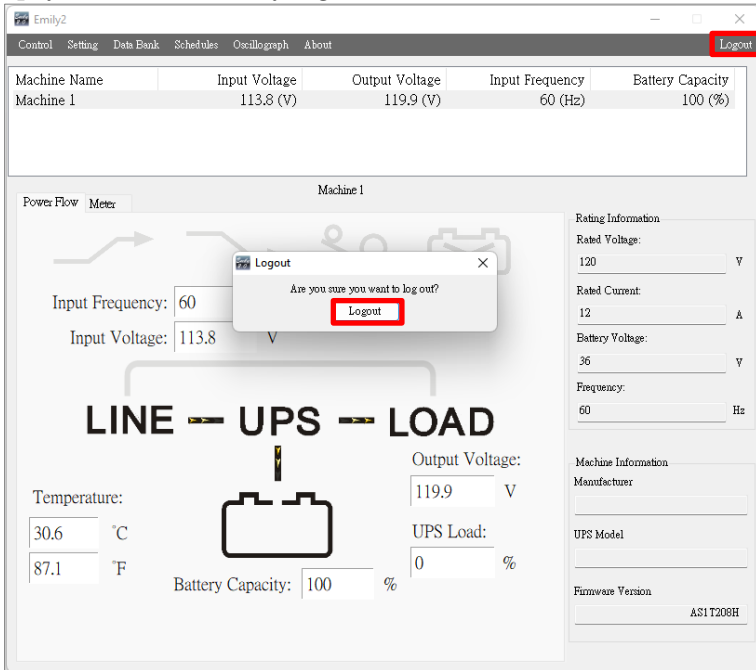
When password changed, the system will automatically logout. User needs to login with new password.



The screenshot shows the same 'Change Password' dialog box as above, but with a success message overlaid. The message box has a blue information icon and the text 'Password Changed!'. The 'Old Password' field now contains three asterisks, the 'New Password' field contains four asterisks, and the 'Confirm the New Password' field contains four asterisks. A red error message is still visible behind the message box: 'Password must contain uppercase and lowercase letters and special symbols, with a minimum of 10 characters.' An 'OK' button is located at the bottom right of the message box, and another 'OK' button is at the bottom right of the main dialog box.

2.3 Logout

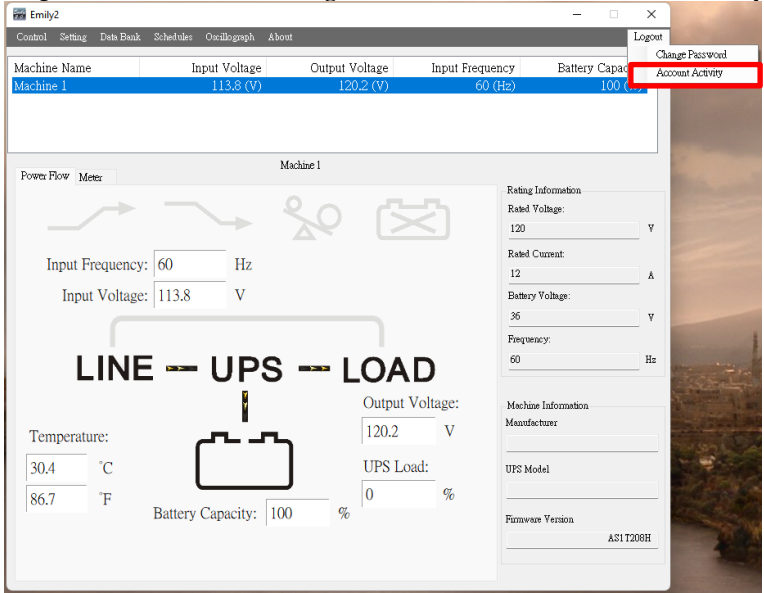
First, click the Logout button, and then click the Logout button on the pop-up, you can successfully log out.



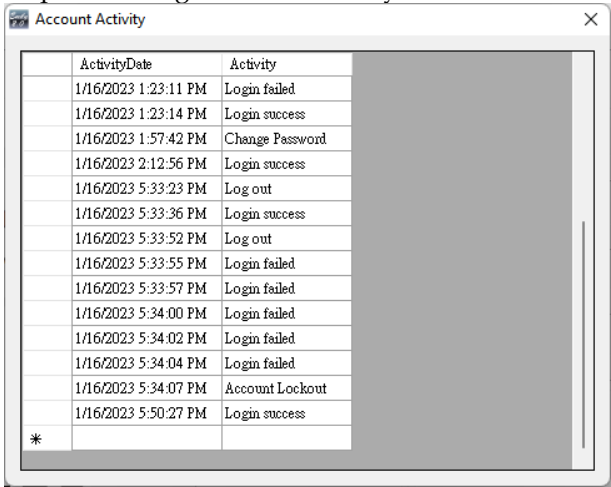
2.4 Account Activity

This function can view all the records made by account activity, including Login success, Login failed, Log out, Change Password and Account Lockout. Please following the steps below to view Account Activity.

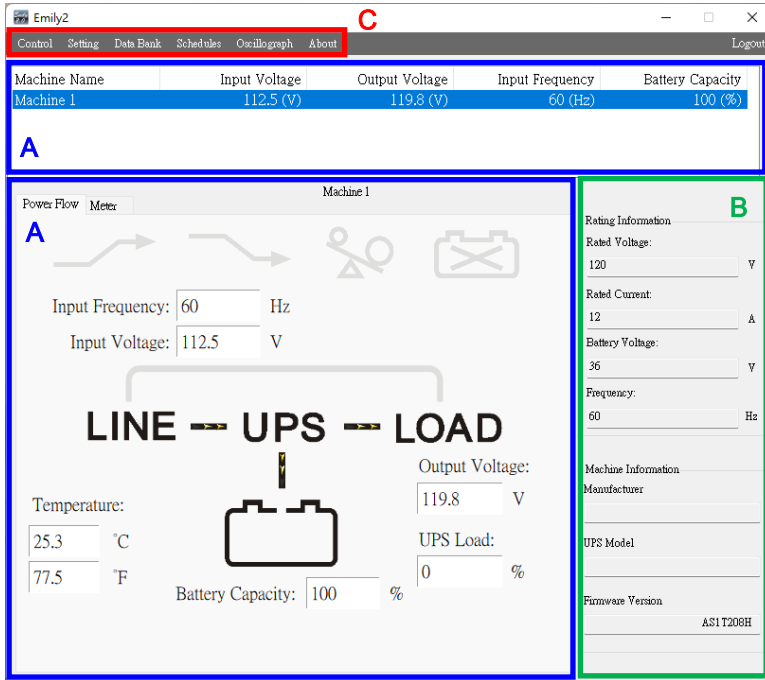
Step 1. Cursor moves to Logout and then select Account Activity button



Step 2. Viewing Account Activity



3. Function Descriptions



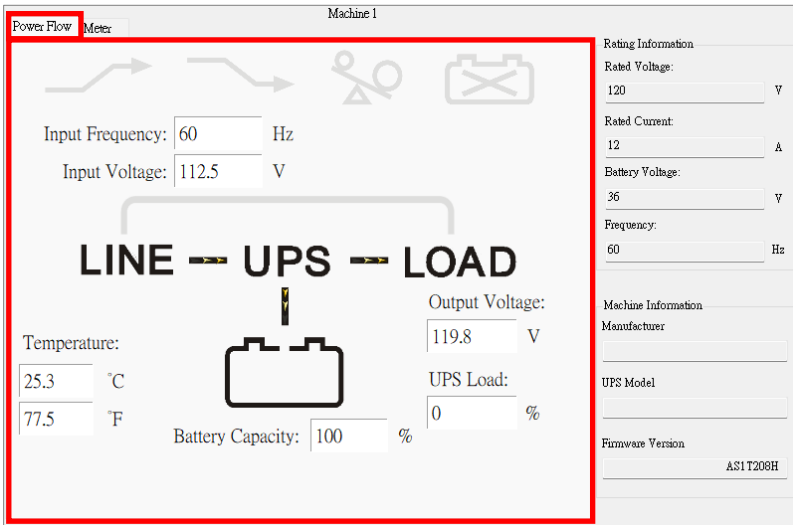
- A. UPS real-time information and status: Detail in section 3.1
- B. UPS rating and information display area: Detail in section 3.2
- C. Function selection area: Detail in section 3.3

3.1 Real-Time Information

Please refer below section for Flow Format Page & Meter Format Page.



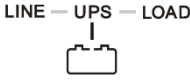
- Input Voltage of UPS
- Output Voltage of UPS
- Input Frequency of UPS
- Load level of UPS
- UPS status
- Power Flow Format Page & Meter Format Page

Power Flow page :

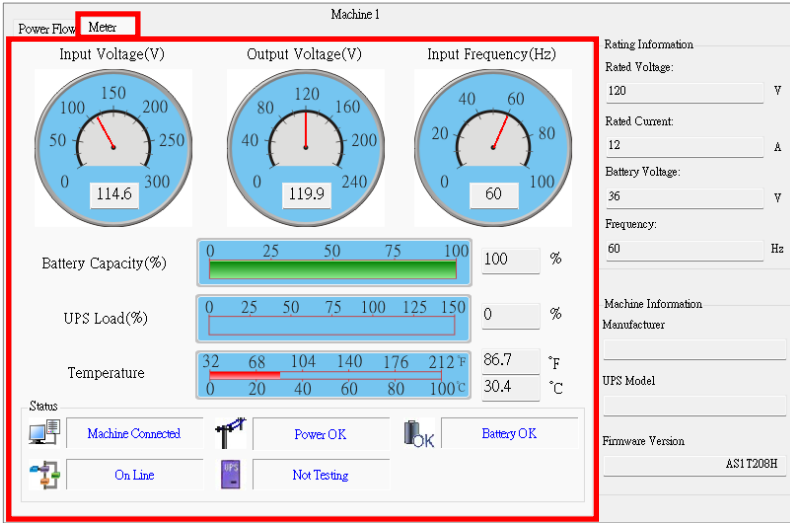


※ Symbols Description



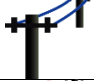


Item	Symbols	Description
1		Boost
2		Buck
3		UPS Overloading
4		Battery Abnormal




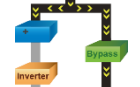




5		Battery Normal
		Battery Low
6		Power flow figure

Meter Page:



※ Symbols Description

Item	Symbols	Description
1		UPS is connected successfully to the computer
		The connection between the UPS & the Computer is disrupted
2		Utility Power Normal
		The utility power is absent or abnormal conditions
3		Battery Level Normal

		Battery Low. The UPS battery is near to end of discharge or is at low power level (2 Icon swap)
		UPS Battery Abnormal
4		ON Line Model
		OFF Line Model
5		Under self test
		No Test In-progress
6		Bypass mode(2 Icon swap)
		

3.2 UPS Rating and Information

Rating Information

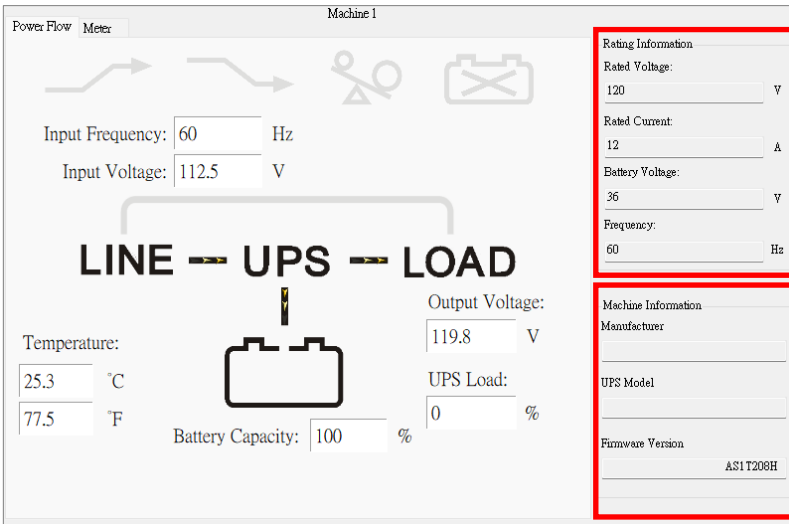
Provides rating of UPS such as:

- Rating Voltage
- Rating Current
- Battery Voltage
- Frequency

Machine Information

Provides information of UPS such as:

- Manufacturer
- UPS Model
- Firmware Version



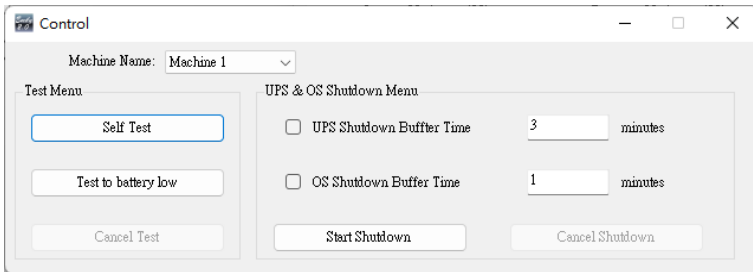
3.3 Function selection

This chapter will introduce how to use or configure for those specific function “Control”, “Import Setting”, “Export Setting”, “General Setting”, “E-mail Setting”, “SMS Setting”, “Data Log”, “Event Log”, “Schedules”, “Oscillograph” and “About”.

3.3.1 Control

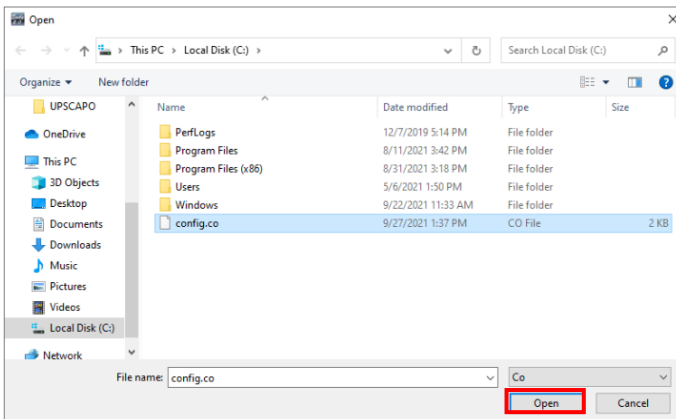
Command UPS directly for the following test.

- UPS Self-Test
- UPS Self-Test Test to battery low
- Cancel UPS Self-Test
- UPS & OS Shutdown
- UPS & OS Cancel Shutdown



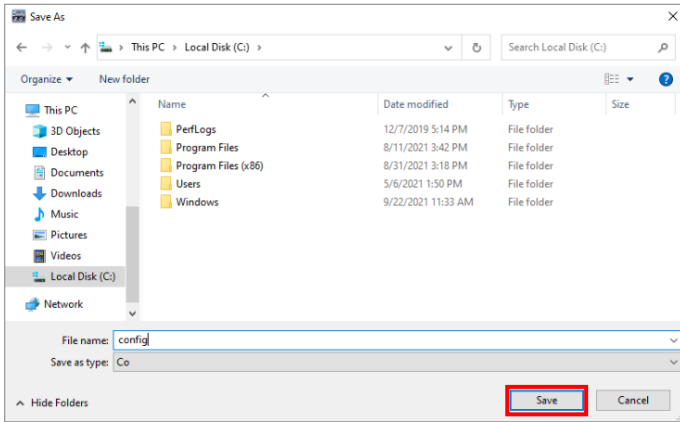
3.3.2 Import Setting

Select the Setting file which you want and click “Open” to Import the Settings to Emily2.



3.3.3 Export Setting

Select Export Folder and click “Save” to save the settings.



3.3.4 General Settings

Allows user to select and set the connecting RS-232/USB or Remote, set to Data Log function and set to turn of UPS or OS condition etc.

3.3.4.1 Setting amount of unit and Machine name

Total Unit of Machine	1	Protocol	Standard
Name	Machine 1	Machine Number	1
	Machine 2	Machine Number	
	Machine 3	Machine Number	
	Machine 4	Machine Number	

3.3.4.2 Choose the Protocol

Standard: for Standard or Remote

Protocol	Standard
	Standard
	Remote

Please refer to 3.3.4.8 for detail if choose the Remote.

3.3.4.3 Setting Communication Interface

Communication Interface RS232
Baud Rate 2400
Com Port COM7
Data Log Record per 10 secs
Maximum Record Unlimited

- Communication Interface: USB / RS232
- Baud Rate: 2400bps/4800bps/9600bps
- Con Port: COM1~COMX

3.3.4.4 Log Record setting

Communication Interface RS232
Baud Rate 2400
Com Port COM7
Data Log Record per 10 secs
Maximum Record Unlimited

- Enable the Data Log Record function
- Set Record timer interval
- Set data storage count of record list

3.3.4.5 Data retention setting

The time of data stored in a database can set by the user. If the value is "0", it means database will never be deleted.

Days of data retention 0 (0:Never Delete)

3.3.4.6 Language

The Emily2 provides various major languages for user. The initial is English.

Language English

3.3.4.7 Pop-up Message

Choosing if you want to see pop-up message when the emergence event occurs.

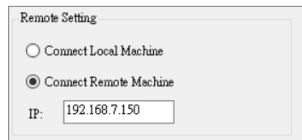
Enable Pop-up Message

3.3.4.8 Remote Setting

Connect Local Machine: Set this PC as the Local Machine which is connected to the UPS.

Connect Remote Machine: Set this PC as the Remote Machine.

Key in the IP of Local Machine to catch the UPS information and build remote shutdown control.



Remote Setting

Connect Local Machine

Connect Remote Machine

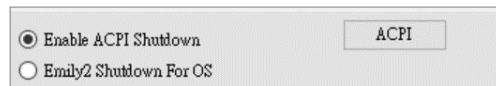
IP:

Note:

With “Connect Remote Machine” you cannot send commands like Scheduling or UPS turn off.

3.3.4.9 Enable ACPI Shutdown

When Enable ACPI Shutdown, all of the Shutdown functions controlled by ACPI.



Enable ACPI Shutdown

Emily2 Shutdown For OS

3.3.4.10 OS Shutdown Type

OS shutdown options.



OS Shutdown Type:

3.3.4.11 Saved Log

If auto saving function is set, the Emily2 will display the closed record after restart.



Autosave Application Status

Display Closed Files Record on Emily2 Restart

3.3.4.12 Optional Command File

Optional Command File to Execute after OS Started Countdown:

Set the file to be executed before the system shutdown. The file type only support .exe file and must choose file from specific folder. The selectable time is from 0 min. to 20 min.

The specific path of execute file

O.S	Specific Path
32-bit	C:\Program Files\Common Files\ Emily2\Apps
64-bit	C:\Program Files (x86)\Common Files\ Emily2\Apps

Clear the program path after shutdown:

When this function is enabled, and operating system shutdown is triggered by shutdown event set on software (Power Fail, Battery low, etc., Schedule), the system will clear the default execution path after restarting the computer. User needs to select the execute file again.

The checkbox beside Browse is to make sure the file has been chosen or not. If the file has been chosen, the checkbox will be checked. If not, it will show as below picture.

Optional Command File to Execute after OS Started Countdown

Clear the program path after shutdown

Browse 1 Minute Max: 20 minutes

3.3.4.13 When Power Failure, OS Shutdown Buffer Time

Set the Warning Time for system shutdown operation after Power Failure. The selectable time is from 1 min. to 2880 min.

When Power Failure, OS Shutdown Buffer Time (Range:1-2880) 10 Minute

3.3.4.14 When Battery Low, OS Shutdown BufferTime

Set the Warning Time for system shutdown operation after Battery Low. The selectable time is from 0 min. to 600 min.

When Battery Low, OS Shutdown Buffer Time (Range:0-600) 0 Minute

3.3.4.15 When Battery Capacity less than or equal the setting level, OS Shutdown Butter Time

Set the Warning Time for system shutdown operation after Battery Low. The selectable time is from 1 min. to 600 min.

The selectable battery Capacity is from 0% to 100%.

<input type="checkbox"/> When Battery capacity Low than	<input type="text" value="20"/>	% (0-100%)
OS Shutdown Buffer Time (Range: 1-600)	<input type="text" value="1"/>	Minute

3.3.4.16 Action When Utility Recovery

When utility Recovered, OS will be continued or cancel the shutdown.

When Utility Recovered,	<input type="text" value="OS Cancels shutdown"/>
-------------------------	--

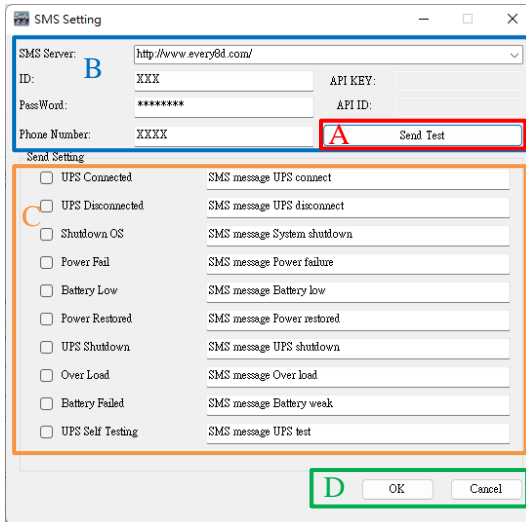
3.3.4.17 Turn off UPS

Set time interval from Windows shutdown to UPS turn-off. The selectable time is from 0.2 min. to 10min.

<input checked="" type="checkbox"/> Turn Off UPS
Time Needed for Shutdown Sequence Before UPS Turns Off : <input type="text" value="2"/>

3.3.5 SMS

Configure to send the event message (e.g. AC Power Fail) to specific one by SMS. The following section is for the detail configuration approach.



These currently have 3 third-party SMS providers supported by Emily2 program. For more information on subscriptions and charges, please go to their respective website as follow:

1) For [Every8d] : Go to <http://www.every8d.com/>

Note : Please subscribe as “Corporate” account in order to use Emily2 program SMS function.

2) For [Voipcheap] : Go to <http://www.VOIPcheap.com/>

Note : Please buy credits in order to use Emily2 program SMS function.

3) For [Clickatell] : Go to <http://www.clickatell.com/>

Note : Payment has to be made to obtain an “API ID” before use.

A. Send Test :

Click to send a test message.

B. Account Settings :

Insert the SMS provided name, ID, passwords, "API-ID₍₁₎", "API-KEY₍₁₎" and mobile phone number (international dialing format, do not put the + or 00, example for number 003934772xxxxx insert 3934772xxxxx).

Note : Do not send to more than 1 mobile phone number.

(1) For Clickatell subscriber only

C. Event & Message Selections :

Click to select the desire Events to be broadcasted and the respective message contents (You may change and retype the Message contents to meet your requirement in English).

D. Save Setting :

Click "OK" to save & apply settings

Note : Internet Firewall may not allow this SMS function. If you have installed Firewall, please allow this function.

3.3.6 E-Mail Configuration

Configure to send the event message (e.g. AC Power Fail) to specific one by E-mail. The following section is for the detail configuration approach.

User Name:	Emily2	A Email Test
User Email Address:	XX@XXXX.XXX	Password: *****
SMTP Server:	XXX.XXX.XXX	SMTP Server Port: 25
Receiver Name:	User	EnableSSL <input checked="" type="checkbox"/>
Mail To:	XX@XXXX.XXX.XXX	B
Subject:	Hello	

Send Setting	
<input type="checkbox"/> UPS Connected	Mail message UPS connect
<input type="checkbox"/> UPS Disconnected	Mail message UPS disconnect
<input type="checkbox"/> Shutdown OS	Mail message System shutdown
<input type="checkbox"/> Power Fail	Mail message Power failure
<input type="checkbox"/> Battery Low	Mail message Battery low
<input type="checkbox"/> Power Restored	Mail message Power restored
<input type="checkbox"/> UPS Shutdown	Mail message UPS shutdown
<input type="checkbox"/> Over Load	Mail message Over load
<input type="checkbox"/> Battery Failed	Mail message Battery weak
<input type="checkbox"/> UPS Self Testing	Mail message UPS test

D OK Cancel

A. Email Test :

Click to send a test message to confirm the settings are correct.

B. Account Settings :

- User Name: Sender
- User Email Address: select a sender E-Mail
- Password: Password of your email server
- SMTP Server: SMTP server or IP address
- SMTP Server port: SMTP Server port
- Receiver Name: name of receiver
- Enable SSL: Enable to secure E-Mail transmissions
- Mail To: Mail address of receiver
- Subject: Subject of E-Mail

Note : If you want to send an email to more than 1 email address, you must use “;” to separate email addresses.

C. Send Setting :

You can use the default message or set or modify your own in English.

D. Save Setting :

Click "OK" to save and apply settings.

Note : Internet Firewall may not allow this E-Mailing function.

3.3.7 Data Log

The data log can be read directly via Emily2 or export to a file with .xlsx or .txt format for application. The following section is for the detail operation.

Time	Input Voltage	Output Voltage	UPS Load	Input Frequency	Battery Capacity	Temperature
2023/01/13 15:52:36	114.9	120.1	0	60	100	31.4
2023/01/13 15:52:24	114.9	119.7	0	59.9	100	31.4
2023/01/13 15:52:13	114.6	119.9	0	59.9	100	31.4
2023/01/13 15:52:03	114.9	119.9	0	59.9	100	31.6
2023/01/13 15:51:51	114.9	120.1	0	59.9	100	31.2
2023/01/13 15:51:40	115	119.7	0	59.9	100	31.6
2023/01/13 15:51:29	114.8	120.1	0	60	100	31.6
2023/01/13 15:51:17	114.6	120.1	0	59.9	100	31.6
2023/01/13 15:51:06	114.8	119.7	0	59.9	100	31.4
2023/01/13 15:50:55	114.7	119.7	0	59.9	100	31.4
2023/01/13 15:50:43	114.8	120.1	0	59.9	100	31.6
2023/01/13 15:50:32	114.8	120.2	0	60	100	31.4
2023/01/13 15:50:22	114.7	119.8	0	60	100	31.4
2023/01/13 15:50:11	114.7	119.7	0	59.9	100	31.6
2023/01/13 15:49:59	114.6	119.9	0	59.9	100	31.4

A area:

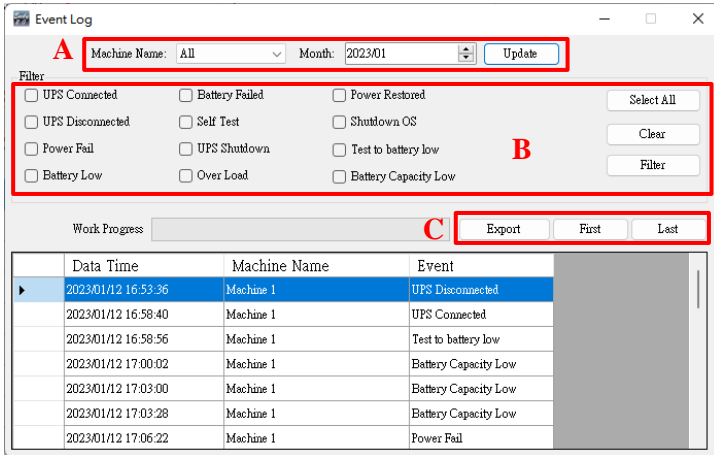
Choose “Machine Name”, “Date”, and click “Update” for data refreshing.

B area:

- Export: Click to export the current data into “xlsx” or “txt” format.
- First: Click to go to the first recorded entry.
- Last: Click to go to the last recorded entry.

3.3.8 Event log

The event log can be read directly via Emily2 or export to a file with .xlsx or .txt format for application. The following section is for the detail operation.



A area:

Choose “Machine Name”, “Month”, and click “Select” for data refreshing.

B area:

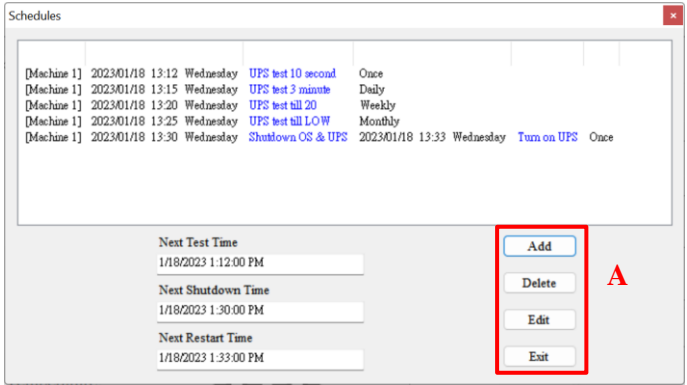
Event log filter for read or export

C area:

- Export: Click to export the current data into “xlsx” or “txt” format.
- First: Click to go to the first recorded entry.
- Last: Click to go to the last recorded entry.

3.3.9 Schedules

Emily2 supports the scheduling self test, turn-on and turn-off function for UPS. The following section is for the detail configuration approach.



A area:

- Add: Create a new task. Please refer to section 3.3.9.1 for detail
- Delete: Delete a task
- Edit: Edit a task Please refer to section 3.3.9.2 for detail
- Exit: Exit the Schedules

3.3.9.1 Add Schedules

Task

A Date : 2023/01/18 Wednesday Machine : Machine 1
Time : 13:14

Frequency
 Once Daily Weekly Monthly

B Control
 UPS Self Test 10 Secs
 UPS Self Test(1-99) 1 minutes
 UPS Self Test Until Battery Capacity 20 %
 UPS Self Test Until Battery Low
 Shutdown Operating System and UPS
 Turn on UPS

C Add Cancel

A. Executive Time :

- Date: Date Setting.
- Time: Time Setting.
- Frequency: Set execute cycle of the schedule.

B. Control :

- Self-test for 10 seconds.
- Self-test for (1-99) minutes.
- Self-test until Battery condition xx%
- Self-test until Low Battery condition.
- Shut Down Operating System and UPS

C. Function: Add or Cancel schedule

3.3.9.2 Edit Schedules

Frist, Select the schedule you want to Test modify. And click “Edit” to modify task.

The Schedules window displays a list of tasks with the following details:

Machine	Date	Time	Day	Task Name	Frequency
[Machine 1]	2023/01/18	13:12	Wednesday	UPS test 10 second	Once
[Machine 1]	2023/01/18	13:15	Wednesday	UPS test 3 minute	Daily
[Machine 1]	2023/01/18	13:20	Wednesday	UPS test till 20	Weekly
[Machine 1]	2023/01/18	13:25	Wednesday	UPS test till LOW	Monthly
[Machine 1]	2023/01/18	13:30	Wednesday	Shutdown OS & UPS	2023/01/18 13:33 Wednesday Turn on UPS Once

Below the list, the Next Test Time is 1/18/2023 1:20:00 PM, Next Shutdown Time is 1/18/2023 1:30:00 PM, and Next Restart Time is 1/18/2023 1:33:00 PM. Buttons for Add, Delete, Edit, and Exit are provided.

Click “Edit” to modify and save this task.

The Task dialog box shows the following configuration:

- Date: 2023/01/18 Wednesday
- Machine: Machine 1
- Time: 13:12
- Frequency: Once, Daily, Weekly, Monthly
- Control: UPS Self Test 10 Secs, UPS Self Test(1-99) 1 minutes, UPS Self Test Until Battery Capacity 20 %, UPS Self Test Until Battery Low, Shutdown Operating System and UPS
- Turn on UPS

Modified

The Task dialog box shows the following modified configuration:

- Date: 2023/01/18 Wednesday
- Machine: Machine 1
- Time: 13:50
- Frequency: Once, Daily, Weekly, Monthly
- Control: UPS Self Test 10 Secs, UPS Self Test(1-99) 5 minutes, UPS Self Test Until Battery Capacity 20 %, UPS Self Test Until Battery Low, Shutdown Operating System and UPS
- Turn on UPS

3.3.10 Oscillograph

It is visual data curve for easy check.

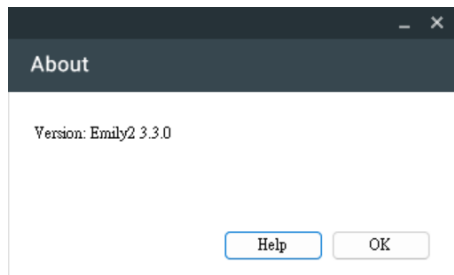


3.3.11 About & Security Notice

It displays copyright and version information of Emily2.

Security notice:

1. Please regularly check with the vendor for the latest version of Emily2 is released.
2. Please keep the security of using environment of the host that connected to the UPS, authorize the system access to maintenance and service personnel only.
3. Record the access to restricted areas with either a physical or devices.
4. Please save the administrator accounts of the host and Emily2 securely.



3.4 Pop-up message

When event occurred (e.g. power fail battery low ... etc.), Emily2 will pop up a message to remind the user to handle it.

