



ATS

Switch

A control panel with four circular buttons on the left: a red stop button, a blue refresh button, a red up arrow button, and a red down arrow button. To the right is a blue LCD display showing various icons (fan, power, warning, etc.) and the number '888'. Further right are three indicator lights: a green light with a sine wave symbol and 'A', a green light with a sine wave symbol and 'B', and a red light with a triangle warning symbol.

A row of connectivity ports on the right side of the device. From left to right: a small black circular port, a USB Type-A port, a green EPO (Emergency Stop) terminal block with two screws, and an RS232 serial port connector.

ATS

- Redundant power to single-input equipment by managing two separate, independent power sources.
- High automatic transfer speed between two sources (8 - 12 ms).
- The LCD display makes it easy to control.
- Takes up minimal space: 1U for 16 A and 2U for 32 A.
- EPO for greater safety.
- The ITS version with manual bypass and hot-swappable ATS guarantees 100% power continuity.
- Output sockets:
 - 16 A version: 8 x IEC C13 and 1 x IEC C19
 - 32 A version: 12 x IEC C13 and 2 x IEC C19 + terminals.
- USB and RS232 ports, relay card with dry contacts and slots for optional communication cards.

Key options

- SNMP/web and RS485 card for remote management

ATS Automatic transfer systems

These guarantee redundant power to rack equipments with a single power supply.



Applications

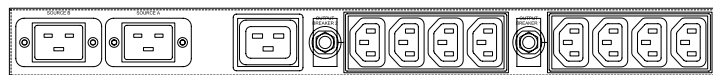
- Server rooms
- Data centres
- Networking equipment
- Video surveillance and security equipment

ATS

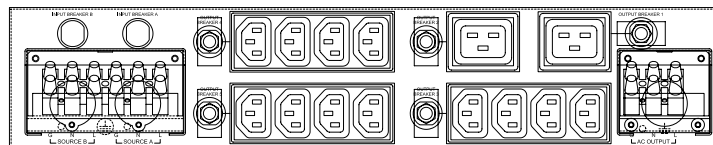
ATS TECHNICAL DATA SHEET

MODEL		ATS-16A-1P	ATS-32A-1P	ITS-32A-1P
SIZE (A)		16	32	32
INPUT	Rated voltage	200/208/220/230/240 Vac (±5%/10%/15%/20%)		200/208/220/230/240 Vac (±5%/10%/15%/20%)
	Frequency	50/60 Hz (±5%/10%/15%/20%)		
	Input sockets	2 x IEC-C20	2 x 32 A terminal blocks	2 x 32 A terminal blocks
OUTPUT	Rated voltage	200/208/220/230/240 Vac		200/208/220/230/240 Vac
	Maximum output current	16	32	32
	Transfer time	8–12 ms		
	Output sockets	8 x IEC-C13 1 x IEC-C19	12 x IEC C13, 2 x IEC C19 1 x 32 A terminal blocks	12 x IEC C13, 2 x IEC C19
CONNECTIVITY	Built-in communication ports	RS232, USB, EPO, relay card with dry contacts (5 out)		
	User interface	LED (source A and/or B, fault status) LCD (parameters: alarms, faults)		
	Optional accessories	RS485, SNMP/Web cards		
GENERAL	Dimensions (WxDxH) mm	440x275x44	440x275x88	440x346x88
	Weight (kg)	4	6	8
	Protection	Downstream short circuit		
ENVIRONMENTAL PARAMETERS	Operating temperature	-5°C to + 40°C (0%–90% non-condensing)		
REGULATIONS	Standards	IEC EN 62368-1, IEC EN 62310-2		
	Marking	CE, UKCA		

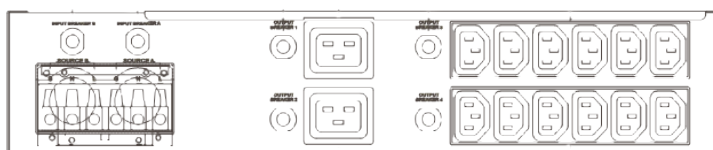
ERMES 16A



ERMES 32A



ERMES 32A BP



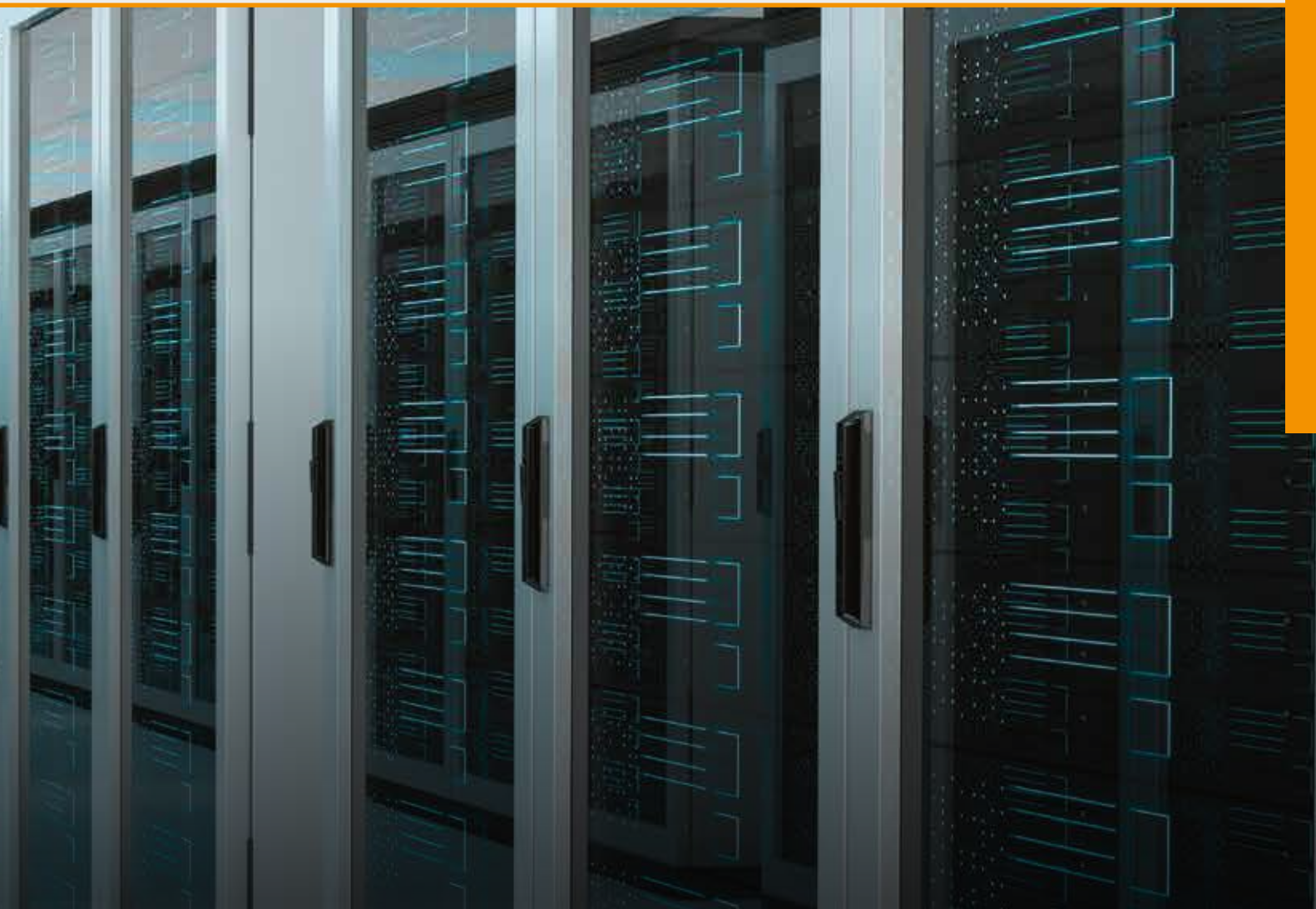


**Innovative solutions
for maximum protection,
control and unparalleled
power quality**



ESP
Active filters

STS



ATS
Active transfer switches



BMS
Battery monitoring system



Rev.2024/06 - Our commitment to continuous innovation means that catalogue data may be subject to change without notice

AblereX Electronics Italy srl

Viale Milanofiori · Strada 6 · Palazzo N1
20089 Rozzano (MI)
info@ablereX.eu · Tel. +39 02 36696420
www.ablereX.eu

AblereX Electronics Ltd

19 The Circle Queen Elizabeth Street,
London, Greater London SE1 2JE - UK
info@ablereX.uk · Ph. +44 (0) 7920 058834
www.ablereX.uk